

**MS Technology MST Viewer™**

---

**MST Viewer V10.0 Reference Manual**



MS Technology Inc  
DOC-0110-02

**MST**

# Notice

While MS Technology believes the information included in this publication is correct as of the publication date, information in this document is subject to change without notice.

UNLESS EXPRESSLY SET FORTH IN A WRITTEN AGREEMENT SIGNED BY AN AUTHORIZED REPRESENTATIVE OF MS TECHNOLOGY, INC. MAKES NO WARRANTY OR REPRESENTATION OF ANY KIND WITH RESPECT TO THE INFORMATION CONTAINED HEREIN, INCLUDING WARRANTY OF MERCHANTABILITY AND FITNESS FOR A PURPOSE. MS Technology Inc. assumes no responsibility or obligation of any kind for any errors contained herein or in connection with the furnishing, performance, or use of this document.

Software described in MS Technology documents (a) is the property of MS Technology Inc. or the third party, (b) is furnished only under license, and (c) may be copied or used only as expressly permitted under the terms of the license.

All contents of this manual are copyrighted by MS Technology Inc. The information contained herein is the exclusive property of MS Technology Inc. and shall not be copied, transferred, photocopied, translated on paper, film, electronic media, or computer-readable form, or otherwise reproduced in any way, without the express written permission of MS Technology Inc.

Microsoft, MS-DOS, Windows, Windows NT, Windows 2000, Windows XP, Windows Vista and SQL Server are either trademarks or registered trademarks of Microsoft Corporation in the United States and/or other countries.

Adobe, the Adobe logo, Acrobat, and the Acrobat logo are trademarks of Adobe Systems Incorporated.

Sun, Sun Microsystems, the Sun Logo, and Java are trademarks or registered trademarks of Sun Microsystems, Inc. in the United States and other countries.

Mac OS X, iPod, and iPhone are registered trademarks of Apple Corporation the United States and/or other countries.

All other trademarks and registered trademarks are the property of their respective holders.

Manual Title: *MST Viewer V10.0 Reference Manual*  
Part Number: DOC-0110-02 Revision: 02

MST Viewer Release Number: 10.0

Printing Date: June 2008

Published by MS Technology Inc. P.O. Box 471843, Charlotte, NC 28247 USA

©1991 - 2008 by MS Technology Inc. All rights reserved.



# Contents

<b>1.MST Viewer - An Introduction</b>	<b>1.1 The Product – MST Viewer: An Overview</b>
	<b>1.2 Need of the Product</b>
	<b>1.3 Software and Hardware Requirement</b>
	<b>1.4 Supported File Formats</b>
	<b>1.5 Compression Types</b>
<b>2.Installation Procedures.</b>	
<b>3.Uninstall the Application</b>	
<b>4.Use of MST Viewer</b>	<b>4.1 As a Stand Alone application.</b>
	<b>4.2 URL Downloading Enabled Application.</b>
	<b>4.3 Common Tasks</b>
	<b>4.3.1 Opening a Document</b>
	<b>4.3.2 Opening a Working Set</b>
	<b>4.3.3 View page/Document</b>
	<b>4.3.4 View Window</b>
	<b>4.3.5 Displaying Documents in Thumbnails</b>
	<b>4.3.6 Zooming, Enhancing and rotating Image</b>
	<b>4.3.7 Editing Document using MST Viewer</b>
	<b>4.3.8 (MST Viewer) Customizing Toolbars/Buttons</b>
	<b>4.3.9 Set Default properties for the viewer</b>
	<b>4.3.10 View list of Contents</b>
	<b>4.4 Annotate A Page Of a Document.</b>
	<b>4.4.1 What is Annotation?</b>
	<b>4.4.2 Annotation Tools Overview</b>
	<b>4.4.2.1 Line</b>
	<b>4.4.2.2 Rectangle</b>
	<b>4.4.2.3 Circle</b>
	<b>4.4.2.4. Arrow</b>
	<b>4.4.2.5 Highlight</b>
	<b>4.4.2.6 Pen</b>
	<b>4.4.2.7 Text</b>
	<b>4.4.2.8 Stamp</b>
	<b>4.4.2.9 Sticky Note</b>
	<b>4.4.3 Showing and Hiding annotation.</b>
	<b>4.4.4 Making annotations permanent.</b>
<b>4.4.5 Setting Priority to Annotation</b>	
<b>4.5 Saving a Document</b>	
<b>4.6 Printing a Document</b>	
<b>4.7 Scanning a Document</b>	
<b>4.8 Closing Document</b>	
<b>4.9 Closing the Application</b>	
<b>5. Appendix</b>	<b>5.1 Short Cut Keys</b>
	<b>5.2 FAQ</b>

# **1. MST Viewer - An Introduction**

## **1.1 The Product – MST Viewer: An Overview**

MST Viewer is a Windows application to view and manipulate various types of files. In a single viewer, you have the luxury of viewing a wide range of file types ranging from images (as the likes of gif, tiff, jpeg etc.) to documents (Microsoft Word, Microsoft Excel, Lotus –123 etc., PDF [through INSO's DII]) and IBM proprietary File formats (MO: DCA, IOCA, PTOCA etc.) too. So you have a one-stop viewer solution for most of your pictures, images, office documents [through INSO's DII].

## **1.2 Need of the Product**

There are so many viewers in the market. What makes MST Viewer different than the rest of the world? We will see now.

As mentioned earlier, this is one such viewer where you can handle almost all of the standard image file formats, most importantly IBM proprietary file formats and PDF. There was a need to have a viewer like this where we can have a solution for all these formats, and bang, the result of the endeavors is named MST Viewer. One of the most important factors that make this software unique of its kind is its speed.

MST Viewer also takes conserves of screen space by allowing the user to customize not even toolbars being displayed, but also the buttons present in the toolbars.

## **1.3 Software and Hardware Requirement**

This software, MST Viewer, can run on any flavor of Windows 98 or higher. There should be a minimum of 64MB RAM. The processor should be 80486 or higher.

## **1.4 Supported File Formats**

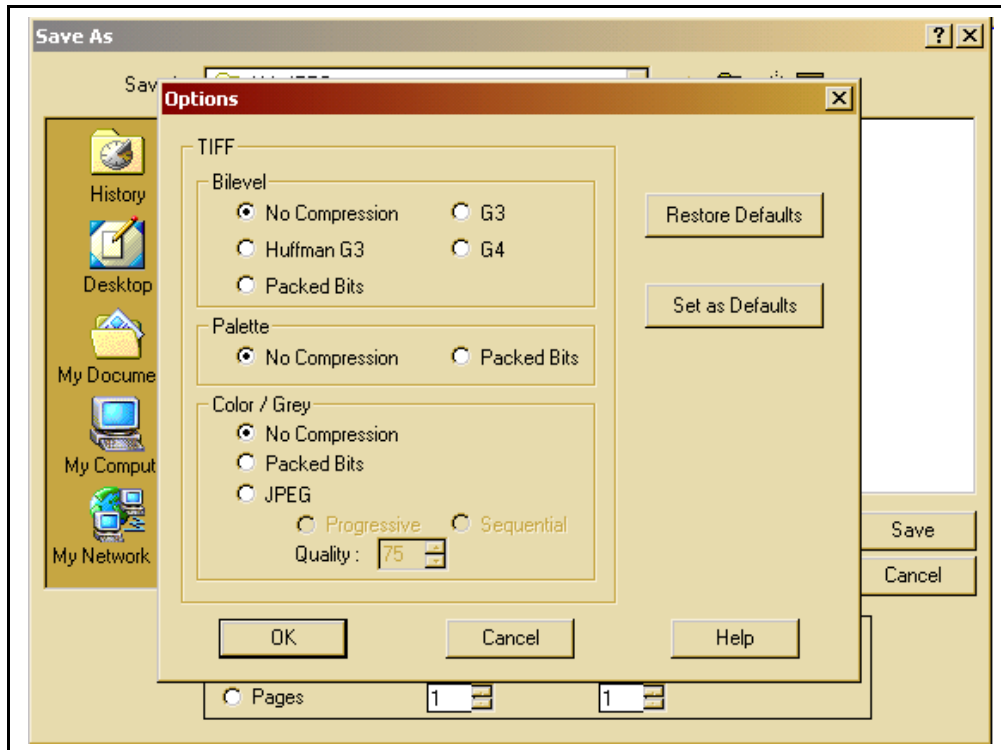
MST Viewer can support the following file formats:

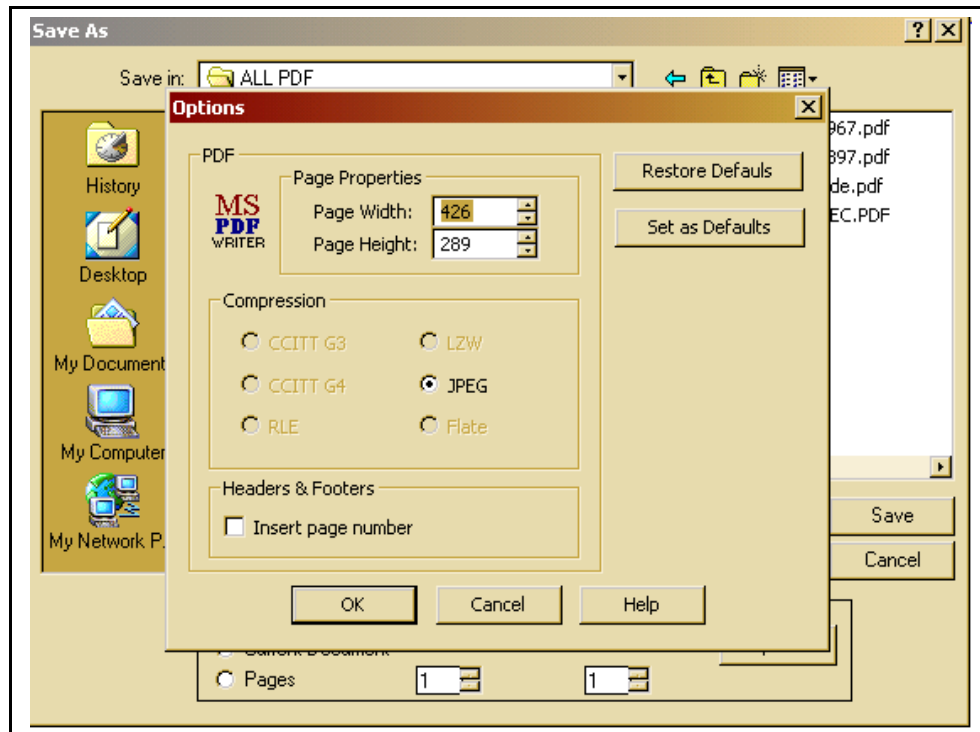
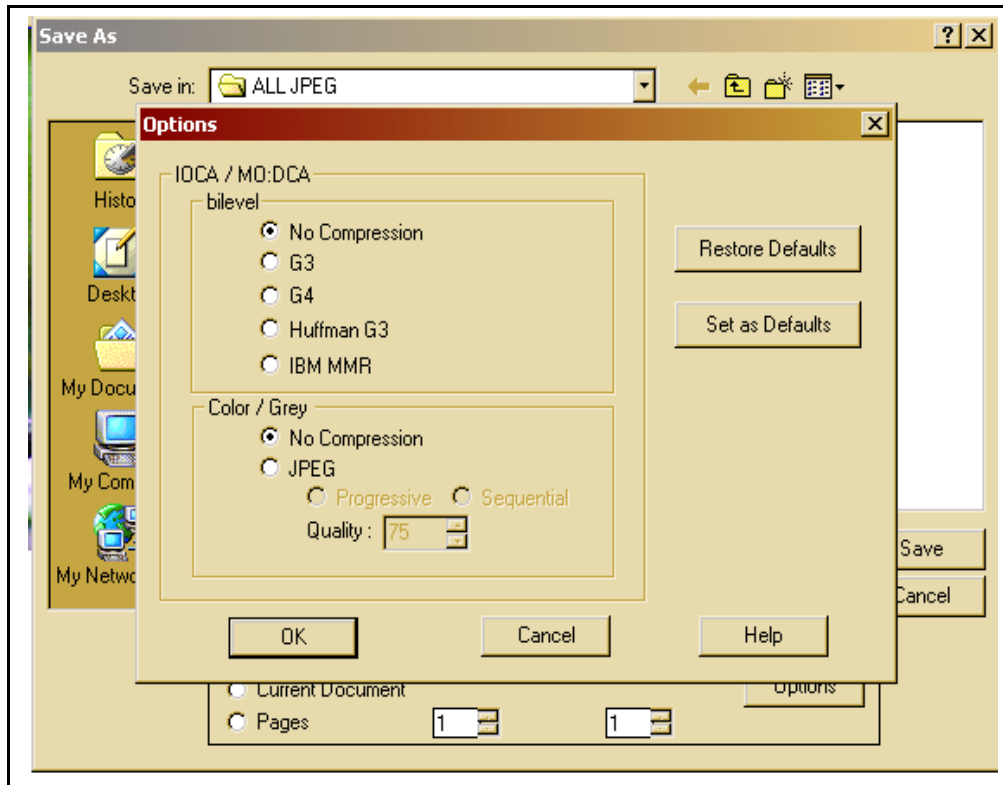
ASCII	Group 4	PDF
ABIC	IOCA (MO:DCA)	PTOCA (MO:DCA)
AFP (MO:DCA)	JBIG	RLE
BMP	JBIG2	RTF
Brooktrout	JPEG	SVG
CALS	JPEG2000	TIFF
CLIP	MO:DCA	TIFF Group 3 / 4
DCX	MO:DCA Uncompressed	TIFF JBIG
DICOM	PBM	TIFF JPEG
DJVU	PCX	TIFF Uncompressed
DOC (MS Word)	PGM	TXT
EPS	PNG	WMF
GIF	PPM	XML
Group 3	PCL	XPS



**1.5 MST Viewer supports the following compression types:**

BMPRLE	LZW
CCITT-G3	MMR
CCITT-G4	PACKEDBITS
HUFFMAN	RLE4
JBIG-2	RLE8
JPEGCOMPRESS	UNCOMPRESSED
JPEG2000	

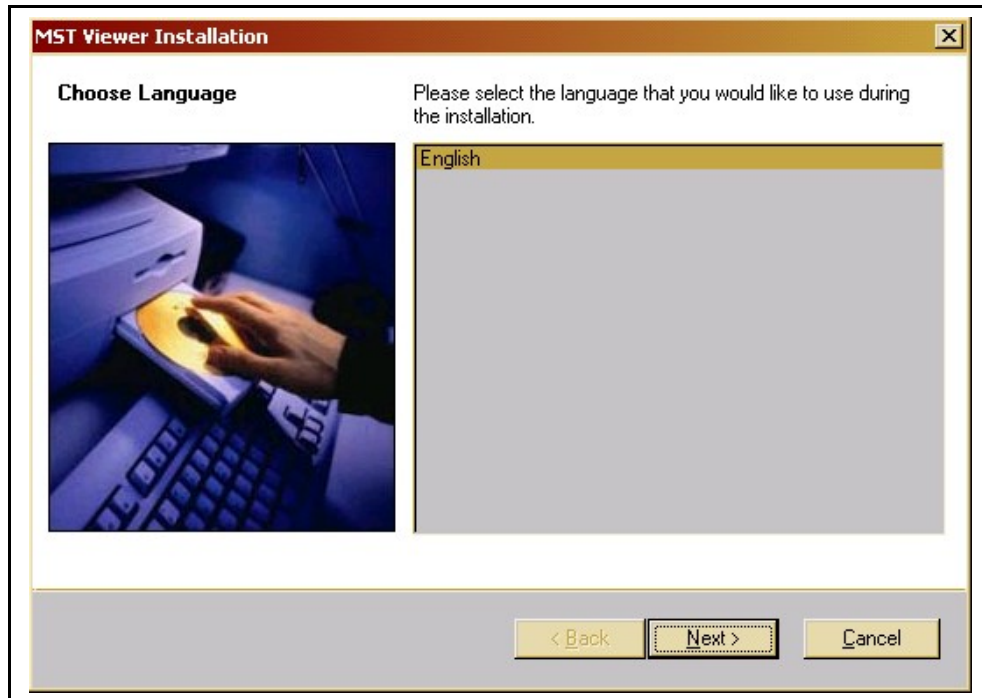




## 2. Installation Procedures.

To install the application double Click the setup “**Setup.exe**”, and follow the Instructions given.

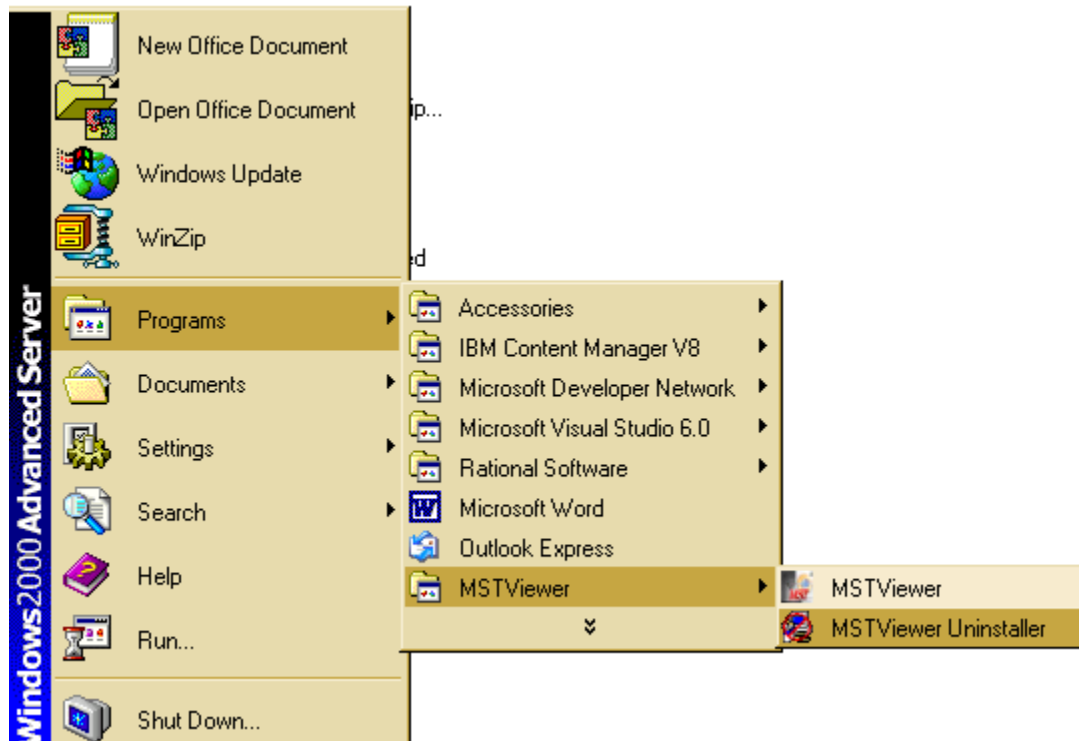
- MST Viewer Installation Dialog Box will appear



- Click Next.
- Now Dialog Box with rules of Installation will appear. Click next.
- Now Dialog Box shows the terms and conditions of the installation, Select “**I Accept...**” check Box and click next.
- Set the destination path where the setup will be installed.
- Now Dialog Box will display the list of icons that will be added in to your start menu, select and click next.
- Click “**Install**” button from the next dialog box.
- This Dialog Box will show the progress of installation.
- Click “**Finish**” when installation is complete.

### 3. Uninstallation

Click **MST Viewer Uninstaller** from the start menu.



### 4. Use of MST Viewer

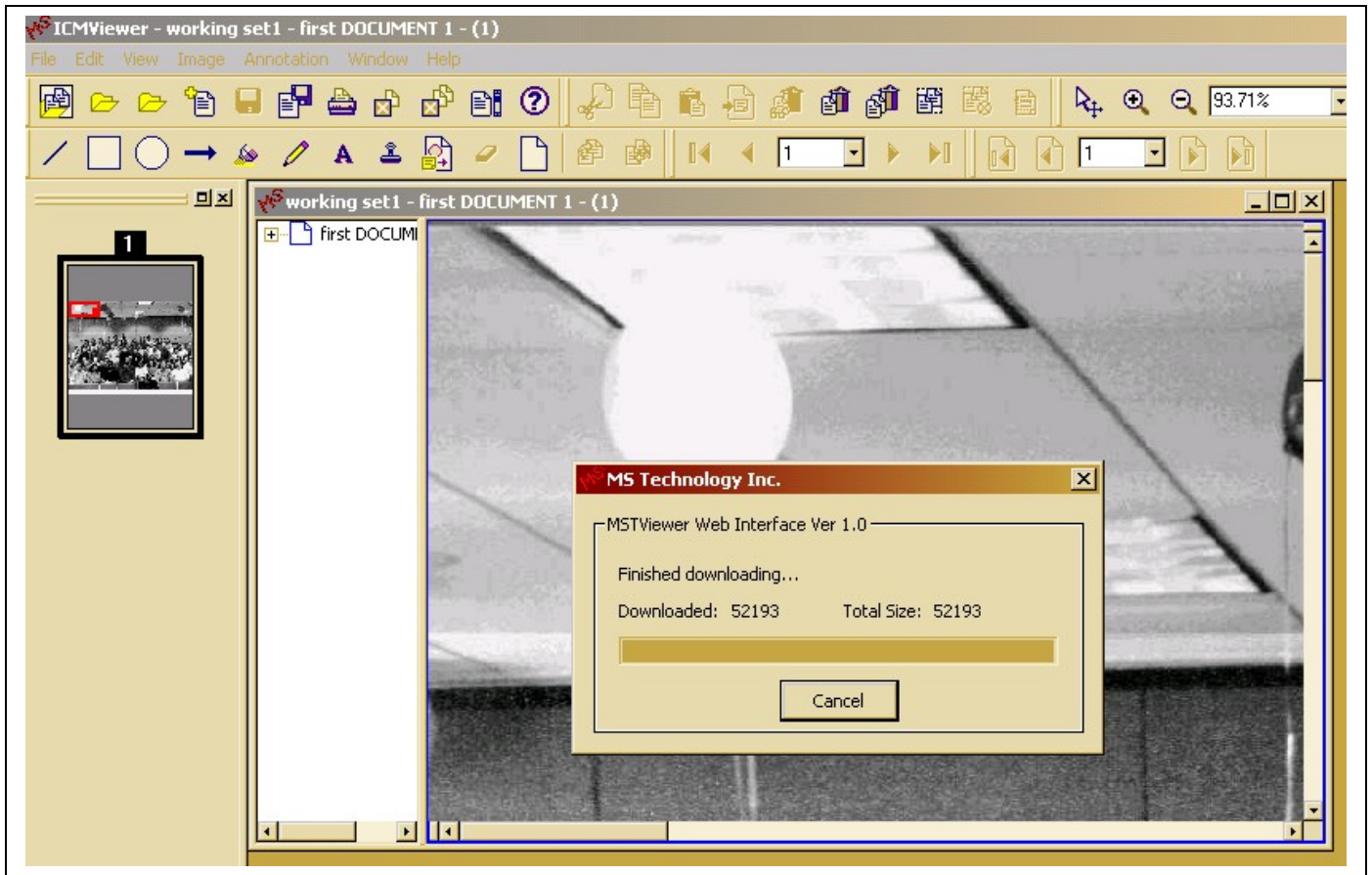
#### 4.1 As a Stand Alone application

A single click in the **ModcaViewer** will start the application. Here we can open an image using **File** menu.

#### 4.2 URL Downloading Enabled Application.

MST Viewer is enabled with the functionality of downloading images from URL (Uniform Resource Locator e.g. <http://www.ms-technology.com/sample.htm>) Users can use this link for evaluating MST Viewer and for exploring how it works in real scenario.

In this scenario whenever we click on any xml file with a .modca extension, MST.exe is invoked. The xml file contains the details of the working set and the documents within that working set. MST.exe downloads the document from the location as mentioned in the Document URL present in the xml file and displays the downloaded document in the MST Viewer within it's own working set.

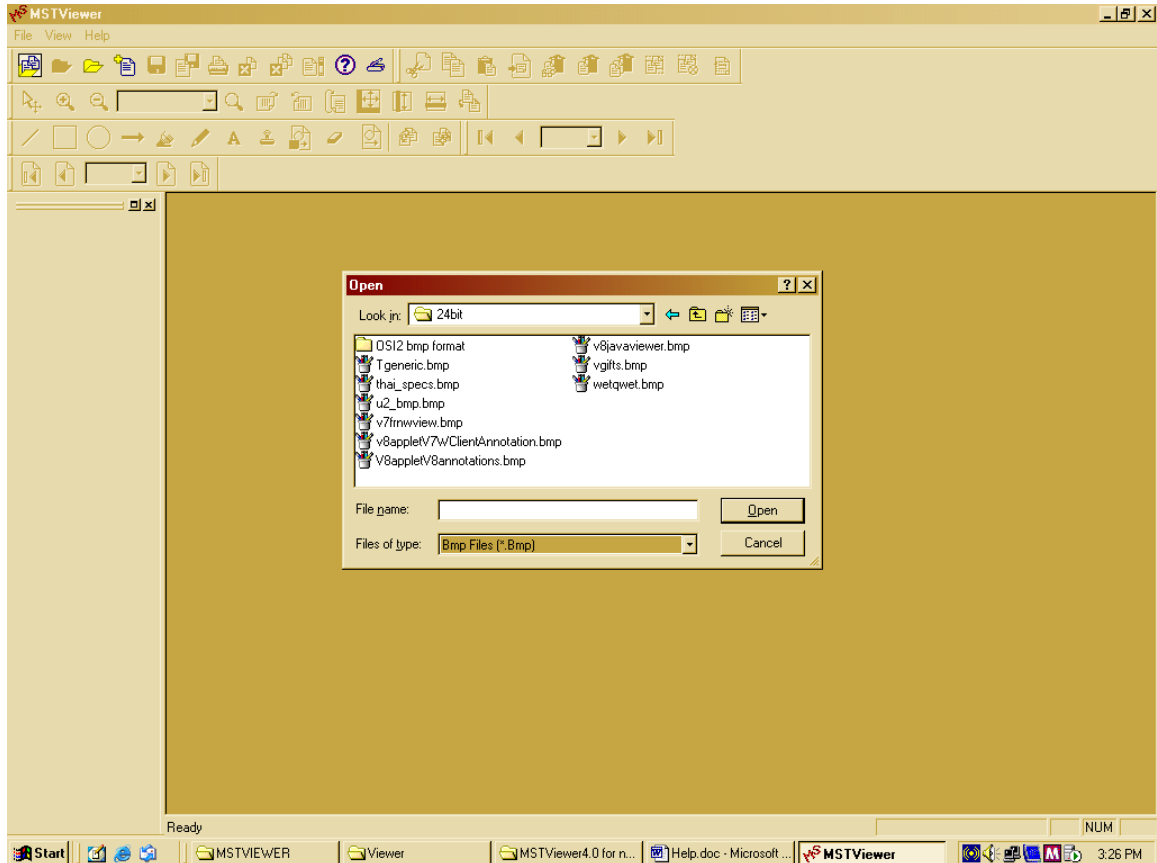


### 4.3 Common Tasks

### 4.3.1 Opening a Document.

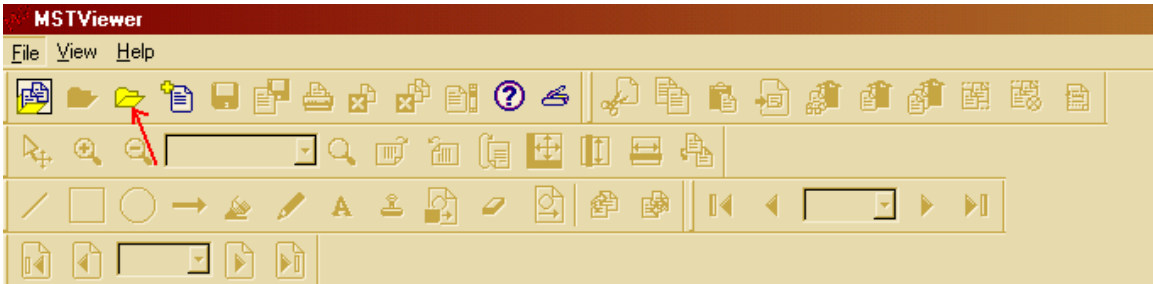
To open a document using menu

1. On the **File** menu, click **Open**.
2. Double-click the folder you want.
3. Double-click the document name, or type it in **File name**, and then click **Open**.



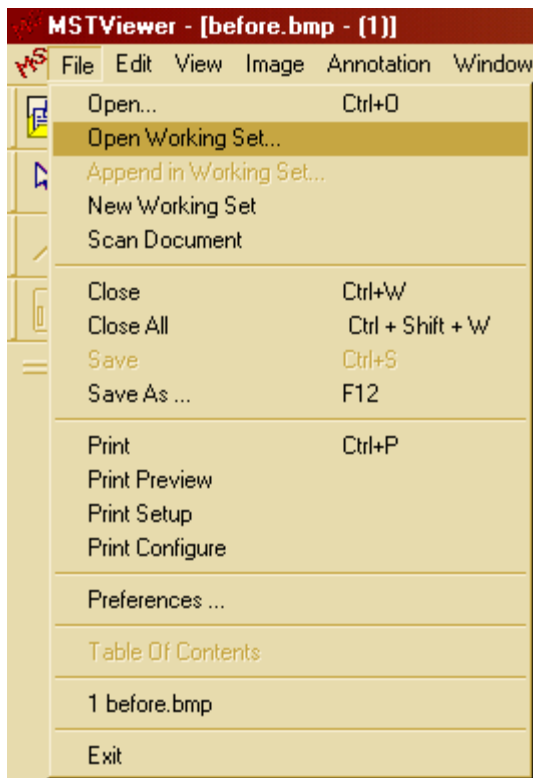
### Opening Document Using Icon

- Click Open Icon from the Toolbar.

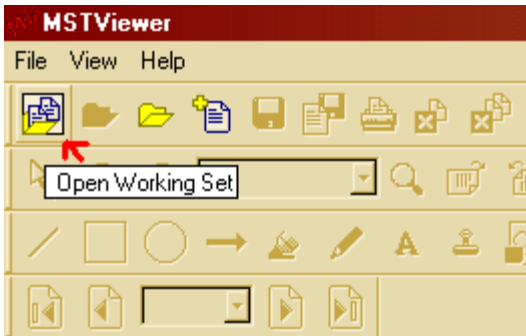


**Note:** To select multiple Documents Press Ctrl and you can select multiple Documents.

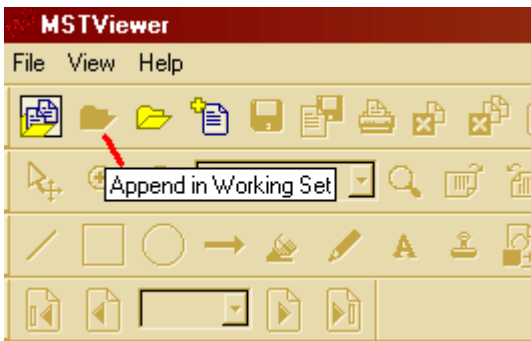
### 4.3.2 Opening a Working Set

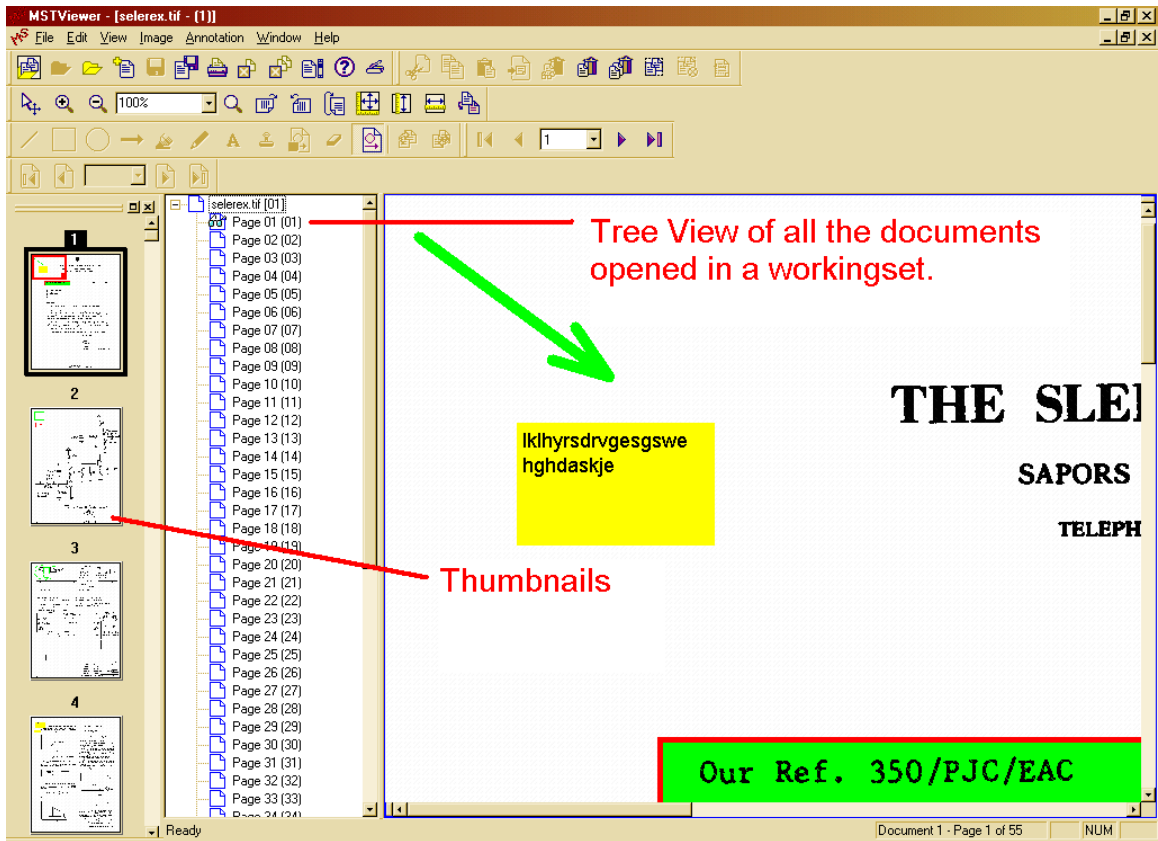


We can open a Working Set from menu as shown in the above picture or from the toolbar icon.

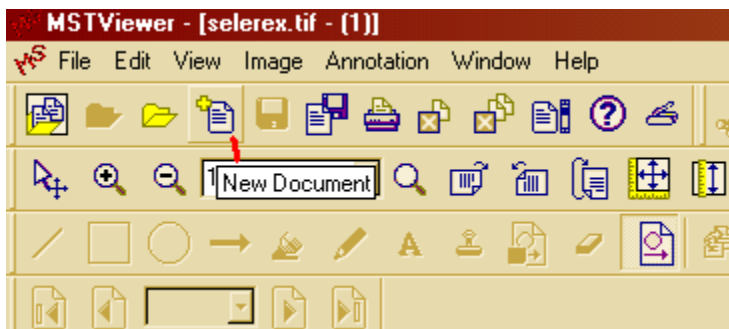


More documents can be appended in that working set using menu or toolbar icon





We can also open a new Working Set (Empty) and append as many documents we want to add there. You can save that new working set with a new name.



 **Note: Working Set is the collection of Documents.**

### 4.3.3 View page /Document

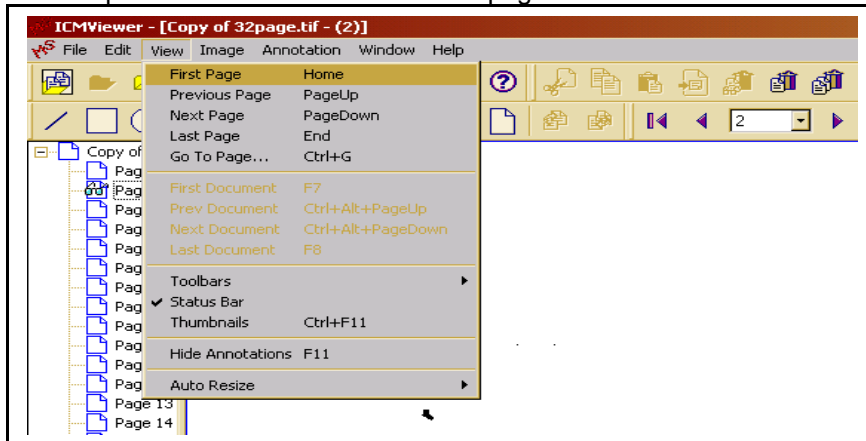
#### View Pages

View	On the View menu, click
Previous page	<b>Previous</b>
Next page	<b>Next</b>
First page	<b>First</b>
Last page	<b>Last</b>
A specific page	<b>Go To</b> , then enter the page number

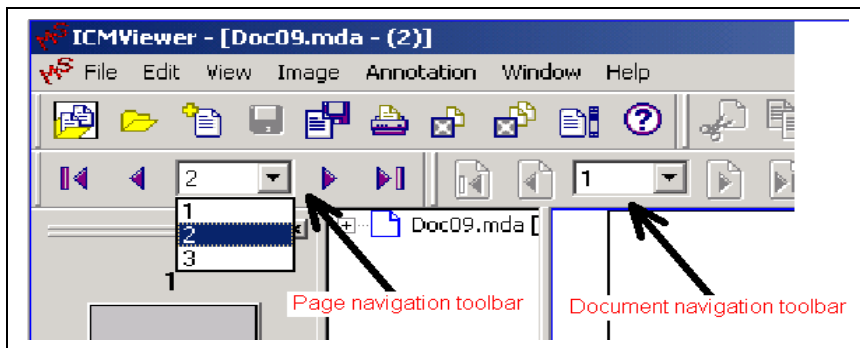
#### View Documents

View	On the View menu, click
Previous Document	<b>Previous</b>
Next Document	<b>Next</b>
First Document	<b>First</b>
Last Document	<b>Last</b>

See the picture of view menu in the next page: -



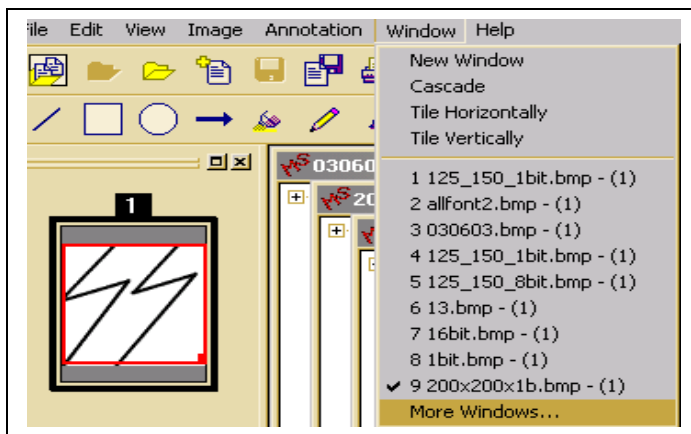
We can also navigate through pages and documents using toolbar: -



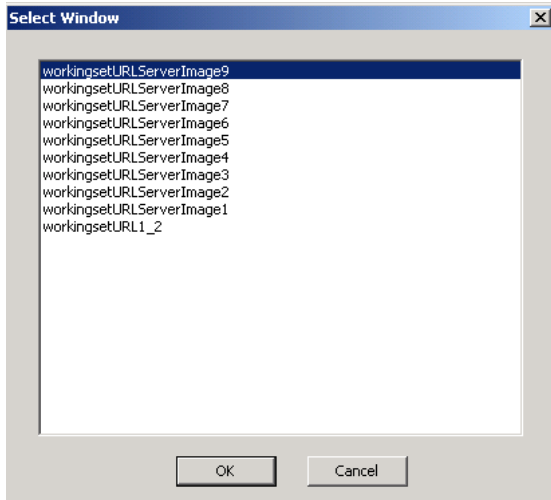
#### 4.3.4 View Window

Different views of windows that MST Viewer has opened:

- Cascade**
- Tile Horizontally**
- Tile Vertically**



And Window menu also displays the list of opened window .If viewer opens more than 9 windows then Clicking “**More Windows...**” will display rest of the windows.



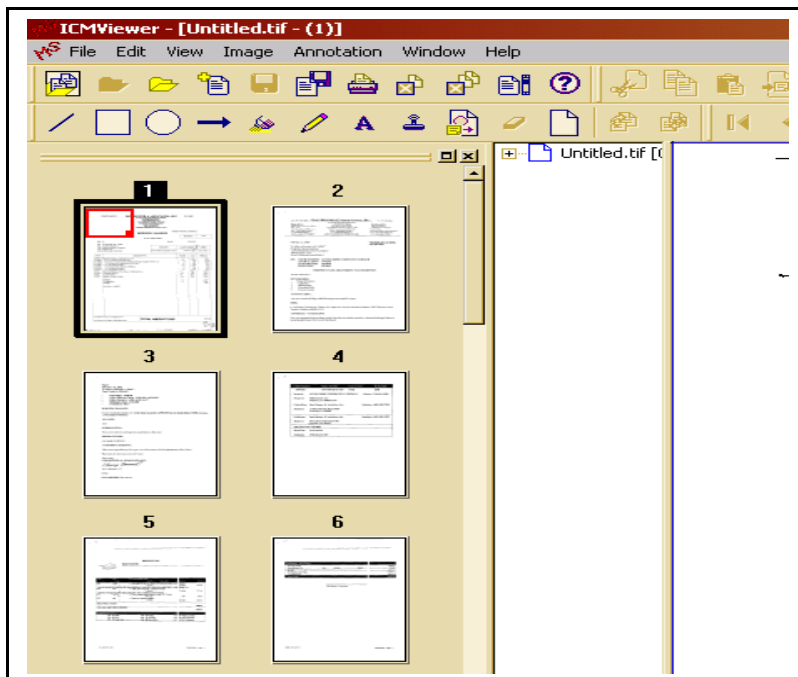
...A new window can also be opened which will contain exactly same document as that of last window.

#### 4.3.5 Displaying Documents in Thumbnails

To display a document in thumbnails

On the **View** menu, click **Thumbnails**.

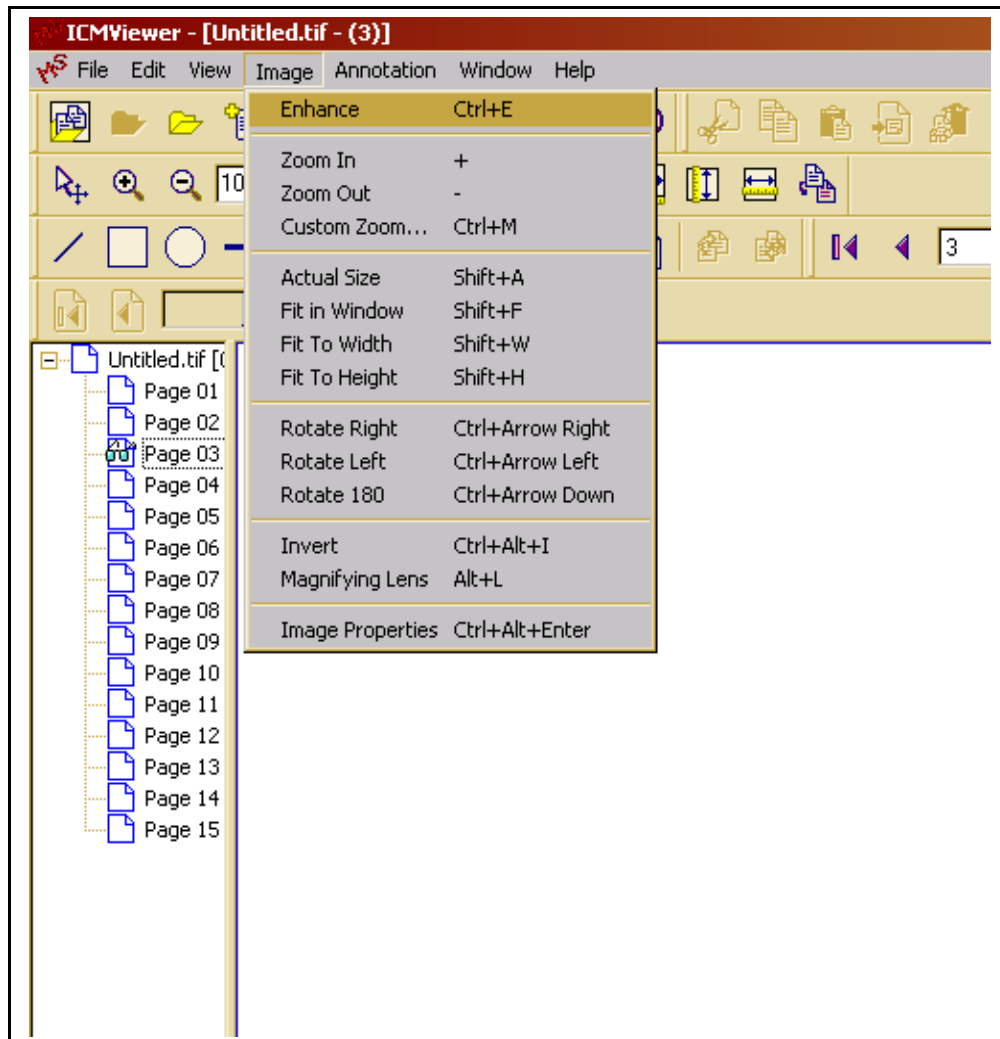
Thumbnail view of the document will be displayed in the window as shown in the following picture.



### 4.3.6 Zooming, Enhancing and rotating Image

On the Image menu, click

To Enhance the image	<b>Enhance</b>
To increase the size of the image	<b>Zoom in</b>
To minimize the size of the image	<b>Zoom out</b>
To resize the image with a specific size	<b>Custom zoom</b>



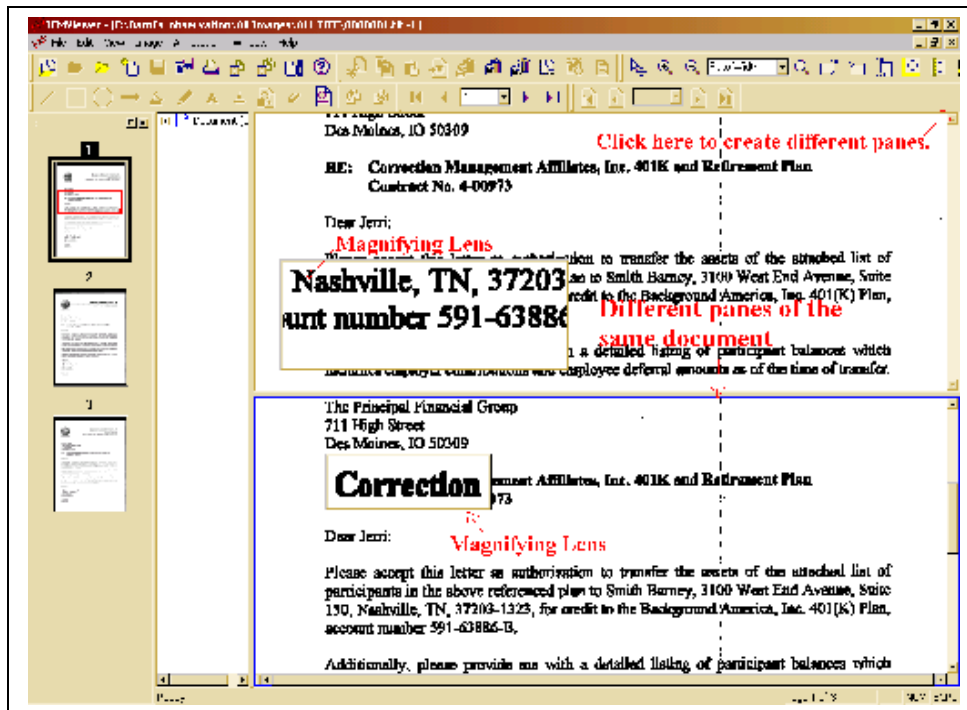
## Changing Image view

Rotate	On the Image menu, click
Right	Rotate Right
Left	Rotate Left
180 Degree	Rotate 180
Invert	Inverting images colors
Magnifying Lens	Magnifying a specific part of image
Image Properties	Viewing Image Properties

## Using Magnifying Lens:

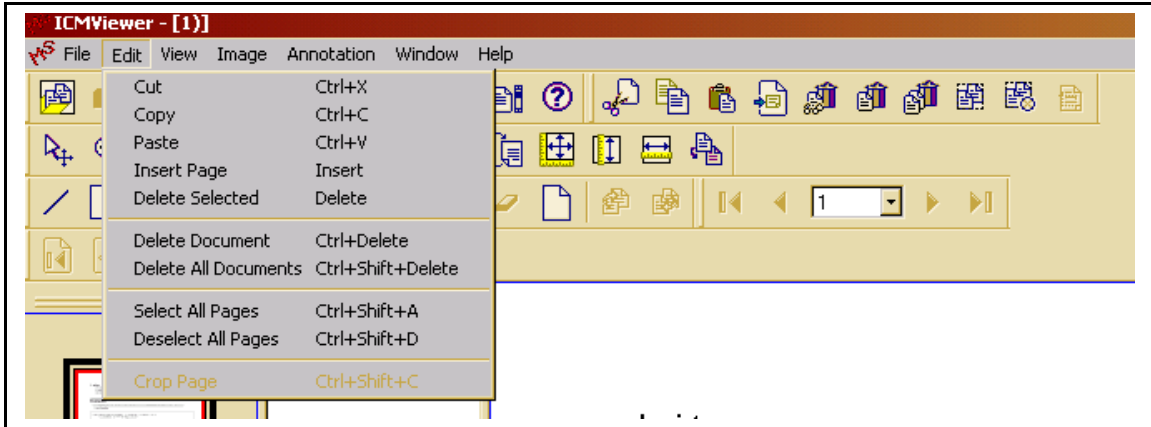
MST Viewer provides Magnifying lens to view a specified part of an image to zoom in. To use this functionality Click on Image then Magnifying Lens.

View of Magnifying Lens used in multiple panes:



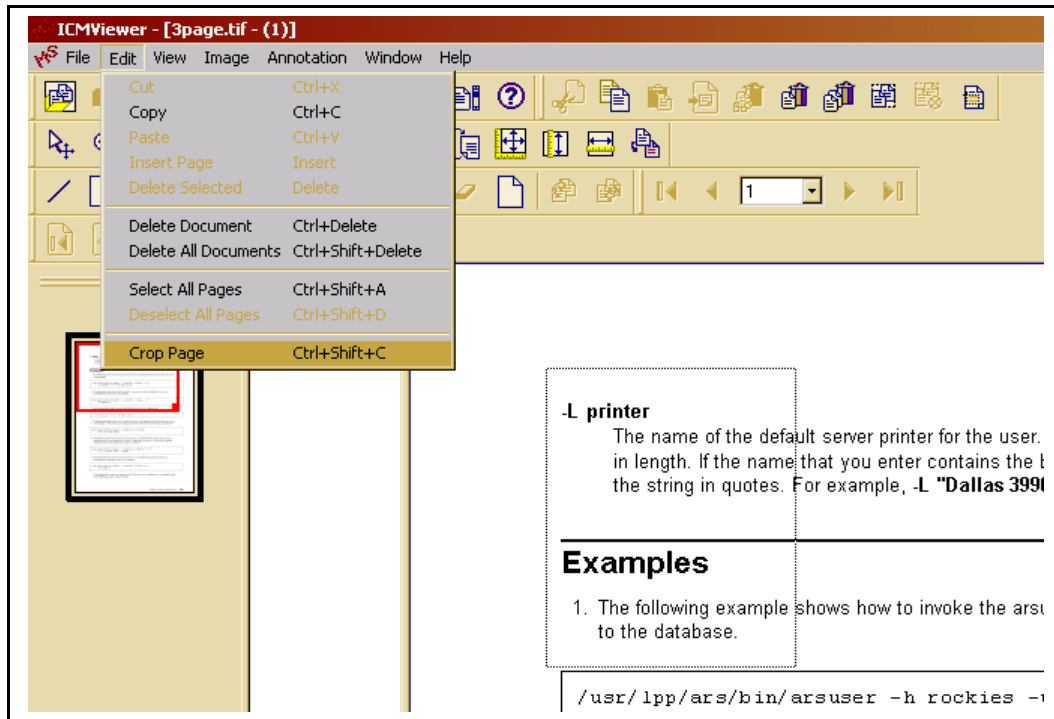
## 4.3.7 Editing Document using MST Viewer

We provide the functionality of Cut, Copy, Paste both pages & Annotations. Which helps the user in creating customized files in desirable formats.

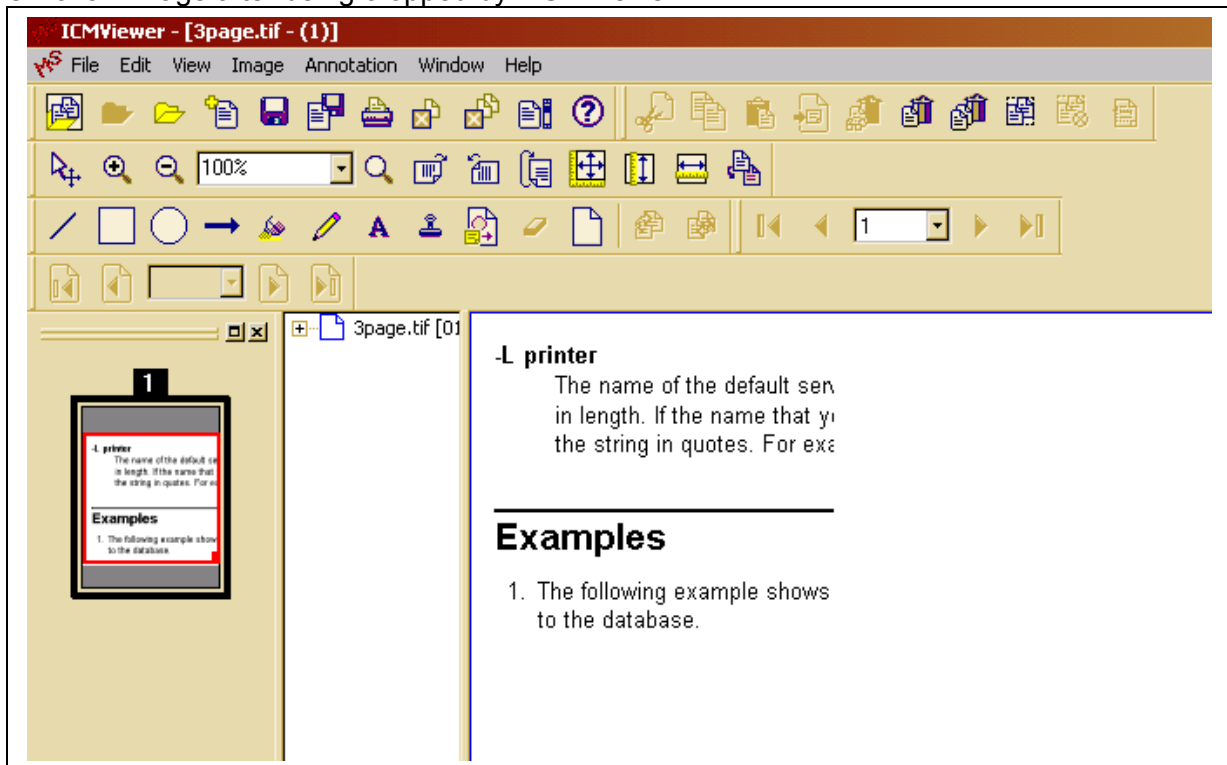


Functionality	Description
Cut	Cut's the selected page and annotation.
Copy	Copy's the selected page and annotation.
Paste	Pastes the selected page and annotation.
Delete Document	Deletes the selected document.
Delete Document	Deletes all documents present in the Working Set of MST Viewer.
Select All Pages	Selects all pages in Tree view and Thumbnail View for the user.
Deselect All Pages	Deselects all pages for the user from both Tree & Thumbnail view.
Cropping Pages	MST viewer allows user to select a specific view from the displayed image.

View Before Cropping an Image from MST Viewer:



View of an Image after being cropped by MST Viewer:

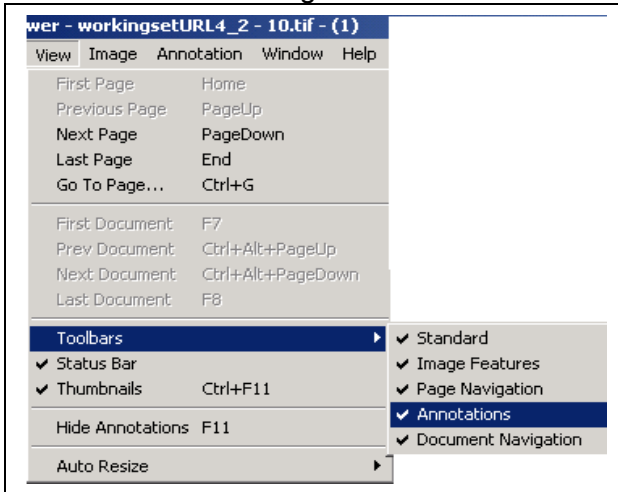


### 4.3.8 (MST Viewer) Customizing Toolbars/Buttons

MST Viewer allows the user to customize toolbars as they wish. We provide this functionality from Preferences Dialog Box:

Conserving screen space / customizing tool bars.

Users will be able to enable and disable all 5 toolbars in user preferences. The toolbars are as follows standard, image features, page navigation, and annotation and document navigation.



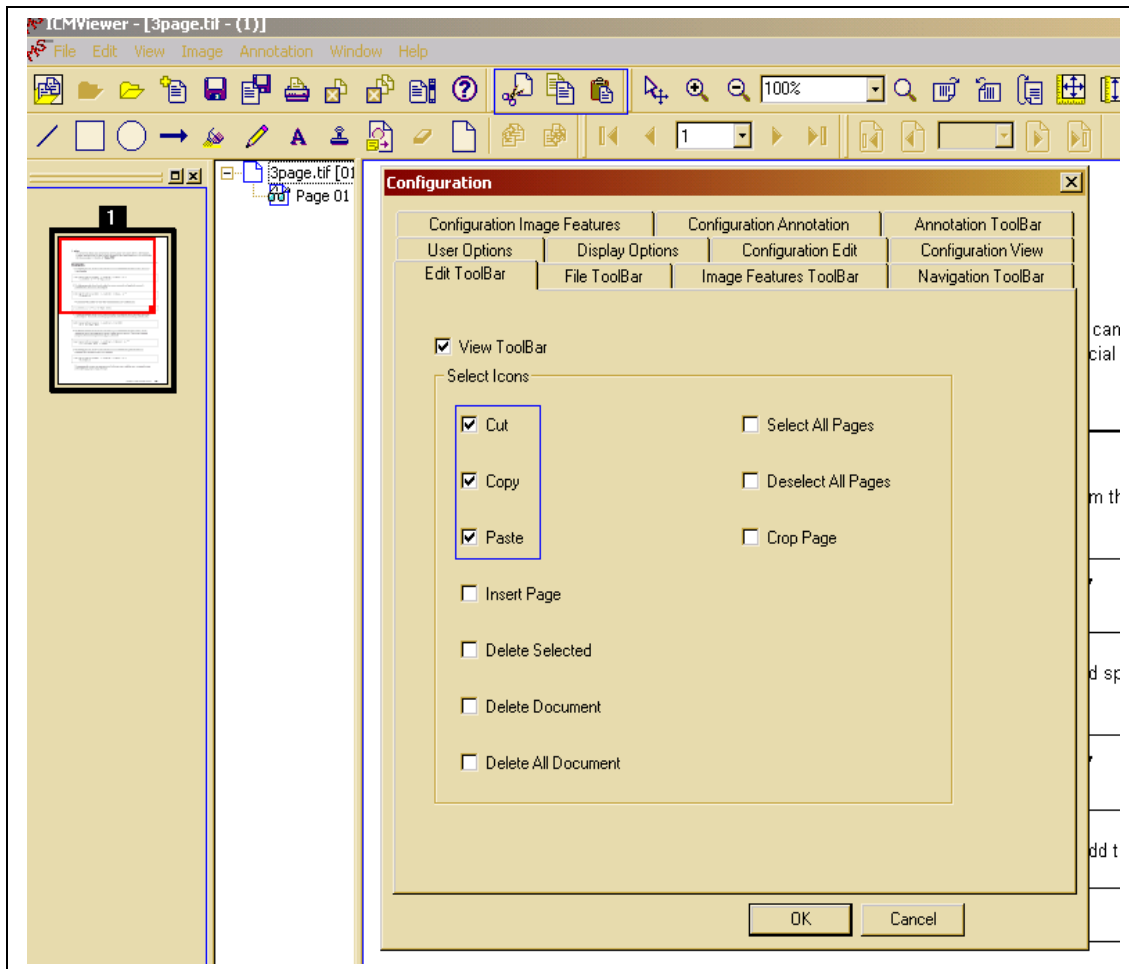
Disabled toolbars will not appear in any way in the viewer.

Users will be able to enable and disable each icon on all 6 toolbars in user preferences.

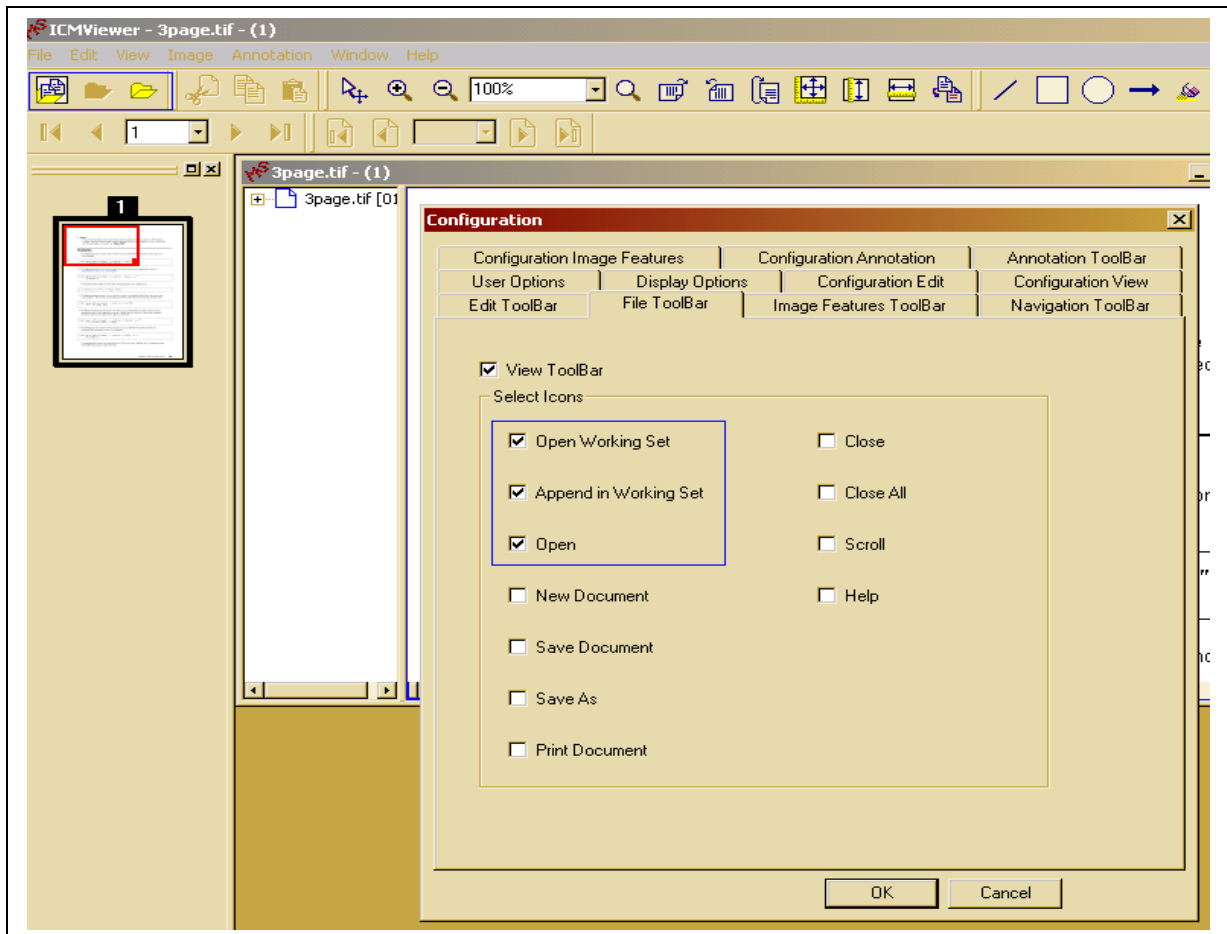
Disabled icons will not appear in any way on the toolbar.

Toolbar settings maintained in preferences will persist to the next time the viewer is opened.

View of Edit Toolbar after removing some buttons from preferences:

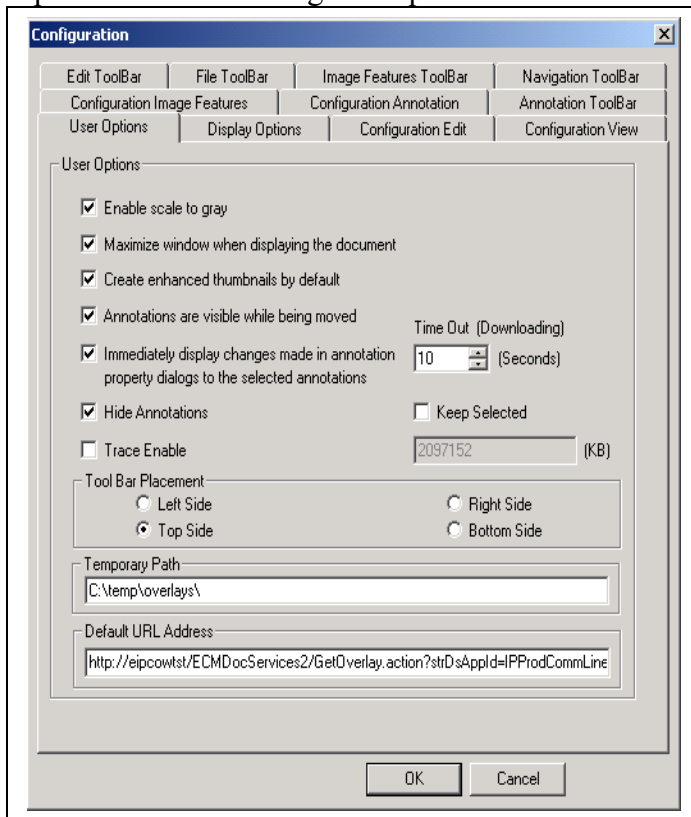


View of File Toolbar after removing some buttons from preferences:



### 4.3.9 Set Default properties for the viewer

Default properties can be set for the viewer from **File->Preferences**. It provides the following user options:-



#### **Enable scale to gray:**

You must select “Enable scale to gray” to enhance an image. Otherwise you will find the disabled Enhance in File menu.

#### **Maximize window when displaying the document:**

To open the document window in maximized form check this option in preference. Next time when an image is opened it will open in maximized form.

#### **Create Enhanced Thumbnail by default:**

Enhanced thumbnail will be opened.

#### **Annotations are visible while being moved:**

Annotations are visible even when it is being moved; otherwise if this option is unchecked annotations are invisible while moved.

**Immediately display changes made in annotation property dialogs to the selected annotations:**

Whenever there is any change (e.g. color change) in the annotations property dialog box it will be reflected in the annotation even before the “ok” button is clicked. If this is unchecked then the change will be reflected in the annotation only after clicking the ok button.

**Hide annotations:**

Annotations are hidden and are not displayed along with the image.

**Keep Selected:**

Once an annotation is selected it will remain active unless we click the normal icon.

**Trace Enabled:**

It will create trace file and the user can give size of the trace file.

**Tool Bar Placement:**

Tool Bar can be placed in any of the four places

- Top
- Bottom
- Left
- Right

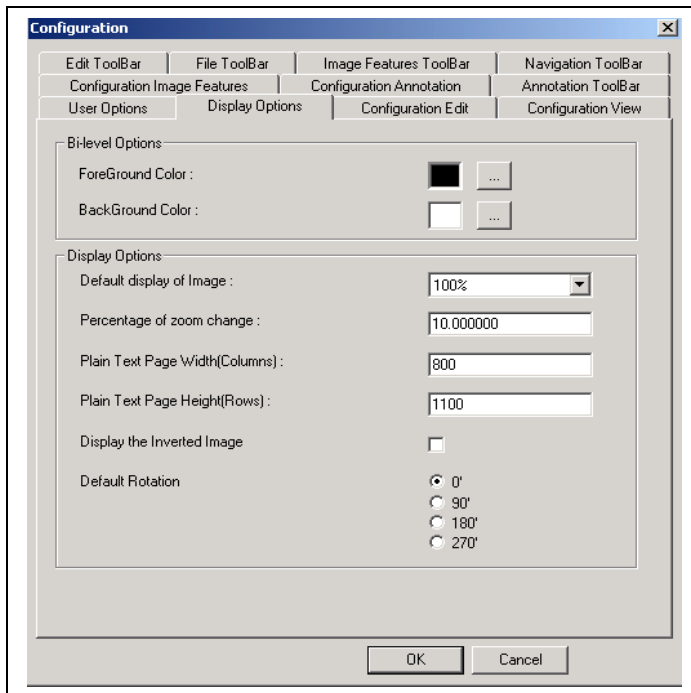
**Temporary Path:**

If the Overlays name is not given in the XML file then by default, overlays are taken from the address given here, e.g. C:\temp\overlays\...

**Default URL Address:**

Default URL address is given here. If URL is not provided in XML file then it collects address from here.

**Default display options are:**



**Bi-level option:**

- **Foreground color:**  
Used for changing the text color.
- **Background color:**  
Used for changing background color of the image.

**Display Options:**

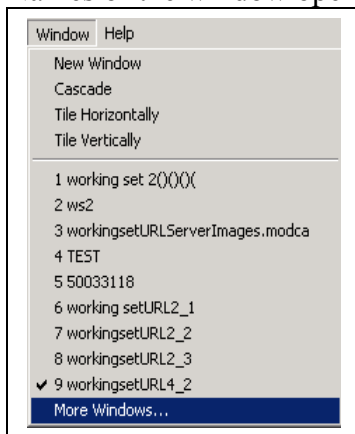
- **Default display of image**  
Default size of the image as compared to the original size.
- **Percentage of zoom change**  
Percentage of increase in size of the image, every time you zoom in.
- **Plain Text Page Width (columns)**  
Number of columns to display in a text file can be written here. The size ranges from 100->2200.
- **Plain Text Page Height (rows)**  
Number of rows to display in a text file can be written here. The size ranges from 100->2200.
- **Display the Inverted Image**  
Inverts the color of the image displayed.

- **Default Rotation**
  - Rotates the image
    - 0°
    - 90°
    - 180°
    - 270°

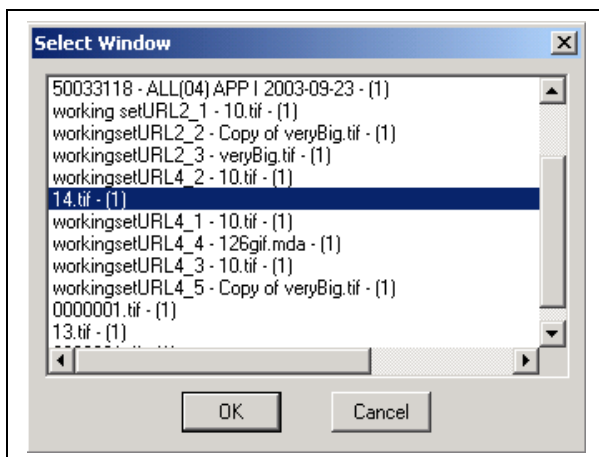
#### 4.3.10 View list of Contents

List of windows opened: -

Names of the window opened appear at the end of “Window” menu.



...And if more than nine (9) windows are opened by the viewer then click “More Windows..” to view the entire list of names.



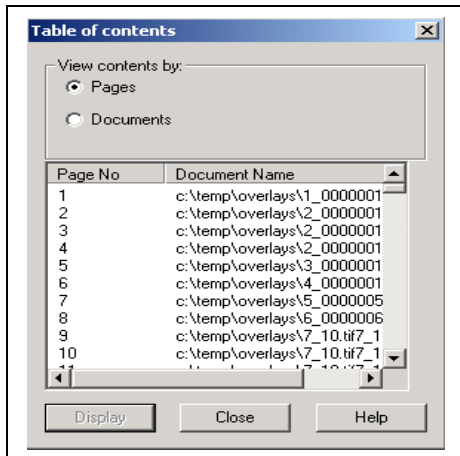
Select and click “OK” to view the selected window.

#### List of documents recently opened:

Names of the last four (4) documents, opened by the viewer appears at the end of File menu

#### List of contents of a window:

Go to File menu ->Table Of Contents



You can select any of the two options:

Pages

Document

Former will display all the pages and later will display all the documents opened by the viewer at present.

## 4.4 Annotate A Page Of a Document.

### 4.4.1 What is Annotation?

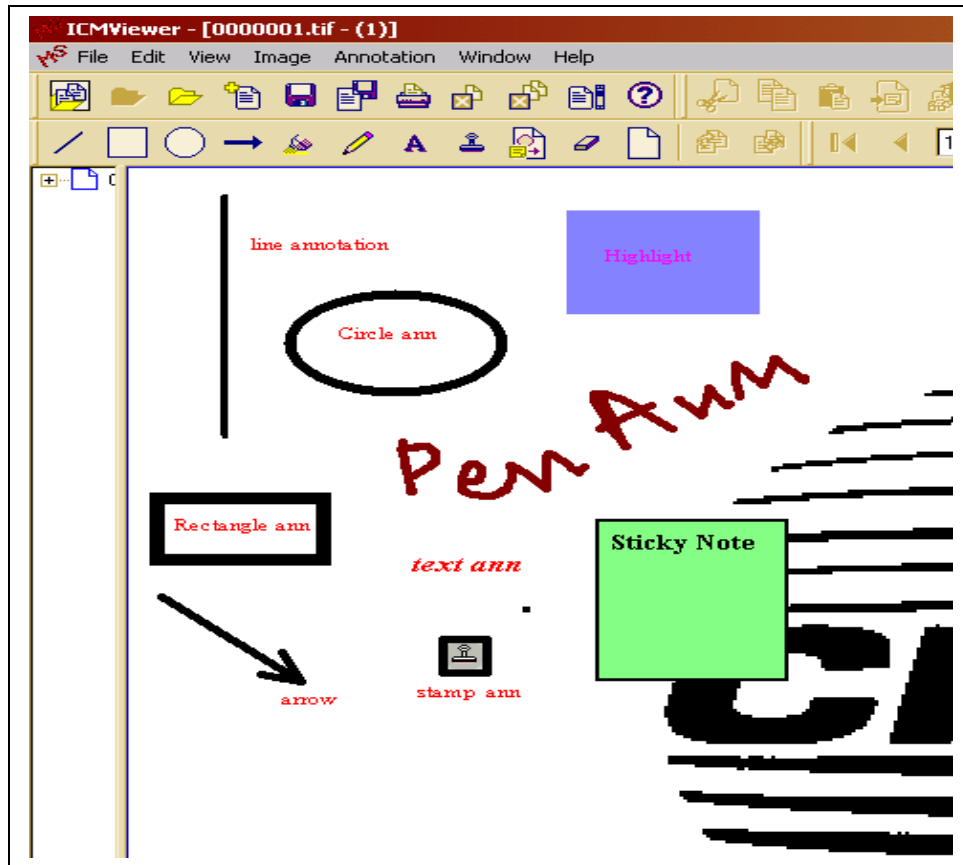
Annotations are digitized versions of the marks commonly used on documents in a paper-based environment. For example, highlights, rubber stamps, and text notes. Like their paper-based counterparts, digitized annotation marks are typically used to prepare documents for subsequent handling in a business process. However, digitized annotations provide additional benefits that paper-based tools do not:

Digitized annotations can be added, moved, and deleted at will.

The attributes of digitized annotations (such as color, size, text, and visibility) can be readily modified.

Annotation marks can be saved within a MO: DCA image file as annotation data that is kept separate from the image data. Usually, though, whenever we make some annotations, a file with the same name and with an extension `.t_I` is created in the current directory. Any annotation that is NOT burned-in (embedded) is put in this file. These marks can also be merged with the image data in a process known as burning-in. To save annotations to any file type other than MO: DCA or TIFF, we save the `t_I` file. The `t_I` file is a GOCA file. Once annotations are burned-in a MO: DCA document, they become part of the base image but can still be manipulated by the annotation functions.

#### 4.4.2 Annotation Tools Overview:



#### Different types of Annotations:

MST Viewer supports following annotations,

##### 4.4.2.1 Line:

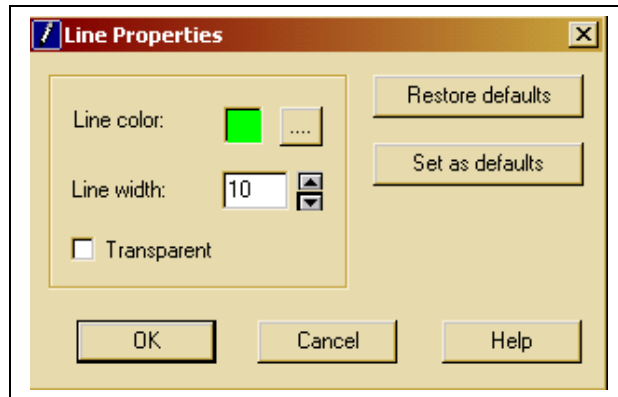
This annotation is especially for drawing straight lines only. To draw a line annotation:

1. On the **Annotation** menu, click **Line** or click on the line icon from the toolbar or use short cut key **Ctrl + Alt + L**.
2. To annotate, hold down the left mouse button and drag the mouse pointer. Release the mouse button when you want to stop drawing.
3. Or you can use **Alt+F2** and then **left arrow**, **right arrow**, **up** and **down arrow** to draw, resize and move the line.

To edit properties of the line annotation:

1. Select the annotation
2. Right-click, and then click **Properties**.

Following is the property window for **line** annotation:



To change the color of the line, click on the button and then select the required color from the color palette.

To change the width of the line write the value in the box or maximize or minimize the existing value.

The line can be made transparent by checking the transparent checkbox.

Existing property values can be made default by clicking **Set as defaults button**.

**Restore default** button restores the default property value.

#### 4.4.2.2 Rectangle:

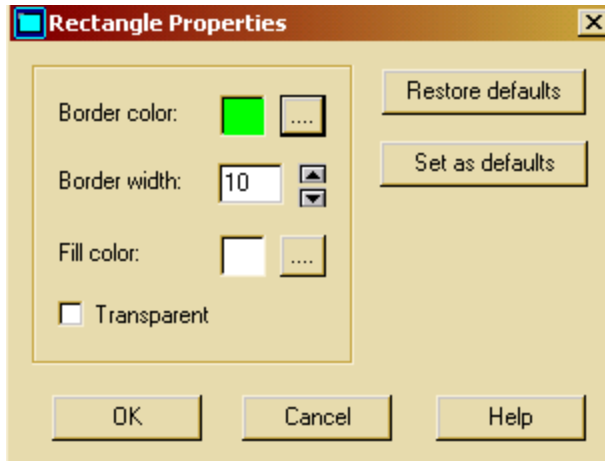
**This annotation is especially for drawing rectangle only.**

To draw a rectangle annotation:

1. On the **Annotation** menu, click **Rectangle** or click on the icon from the toolbar or use short cut key **Ctrl+Alt+R**.
2. To annotate, hold down the left mouse button and drag the mouse pointer. Release the mouse button when you want to stop drawing.
3. Or you can use **Alt+F2** and then **left arrow**, **right arrow**, **up** and **down arrow** to draw, resize and move the line.

To edit properties of the rectangle:

1. Select the annotation
2. Right-click, and then click **Properties**.



Border color changes the color of the border of the rectangle.

Border width changes the border width of the rectangle.

Fill color fills color inside the rectangle.

Checking the Transparent checkbox will make the rectangle transparent to other colors of the page.

**Restore Default** button will restore default property of the rectangle and **Set as Default** button will set the present property value of the rectangle as the default value.

#### 4.4.2.3 Circle:

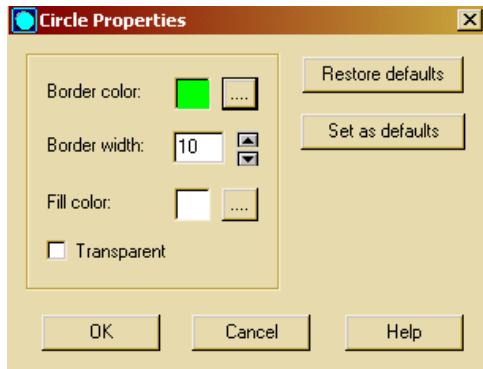
Again if we need to circle out on any text or part of the image, we can use this.

To draw a circle annotation:

1. On the **Annotation** menu, click **Circle** or click on the icon from the toolbar or use short cut key **Ctrl+Alt+C**.
2. To annotate, hold down the left mouse button and drag the mouse pointer. Release the mouse button when you want to stop drawing.
3. Or you can use **Alt+F2** and then **left arrow**, **right arrow**, **up** and **down arrow** to draw, resize and move the line.

To edit properties of the circle:

1. Select the annotation
2. Right-click, and then click **Properties**.



Border color changes the color of the border of the circle.

Border width changes the border width of the circle.

Fill color fills color inside the circle.

Checking the Transparent checkbox will make the circle transparent to other colors of the page.

**Restore Default** button will restore default property of the circle and **Set as Default** button will set the present property of the circle as the default value.

#### 4.4.2.4 Arrow:

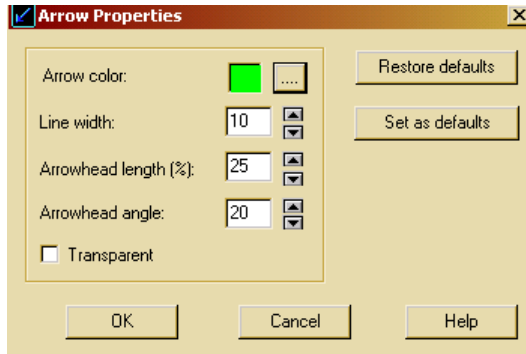
Normally we would draw arrows to redirect certain parts of the document.

To draw an arrow:

1. On the **Annotation** menu, click **Circle** or click on the icon from the toolbar or use short cut key **Ctrl+Alt+A**
2. To annotate, hold down the left mouse button and drag the mouse pointer. Release the mouse button when you want to stop drawing.
3. Or you can use **Alt+F2** and then **left arrow**, **right arrow**, **up** and **down arrow** to draw, resize and move the arrow.

To edit properties of the arrow:

1. Select the annotation
2. Right-click, and then click **properties**



Arrow color changes the color of the arrow.

Line width changes the Line width.

Arrowhead length changes the length of the arrowhead.

Arrowhead angle is the angle between the line and the arrowhead.

Checking the Transparent checkbox will make the arrow transparent to other colors of the page.

**Restore Default** button will restore default property of the circle and **Set as Default** button will set the present property of the arrow as the default value.

#### 4.4.2.5 Highlight:

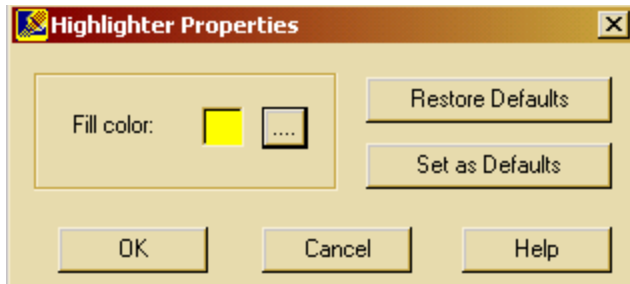
This is used to highlight a certain important section of the document like we use highlighter on paper.

To use a highlighter:

1. On the **Annotation** menu, click **Highlighter** or click on the icon from the toolbar or use short cut key **Ctrl+Alt+H**
2. To annotate, hold down the left mouse button and drag the mouse pointer. Release the mouse button when you want to stop drawing.
3. Or you can use **Alt+F2** and then **left arrow**, **right arrow**, **up** and **down arrow** to draw, resize and move the arrow.

To edit properties of the Highlighter:

1. Select the annotation
2. Right-click, and then click **properties**



Fill color changes the color to use to highlight a text.

**Restore Default** button will restore default property of the Highlighter and **Set as Default** button will set the present property of the arrow as the default value.

#### 4.4.2.6 Pen annotation:

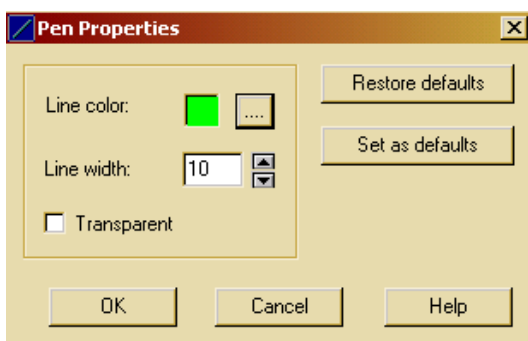
We can use this annotation to draw (irregular) lines just like you do using a pen.

To write with a pen:

1. On the **Annotation** menu, click **pen** or click on the icon from the toolbar or use short cut key **Ctrl+Alt+P**.
2. To annotate, hold down the left mouse button and write. Release the mouse button when you want to stop writing.
3. **Alt+F2** doesn't work in case pen annotation. Press **Esc** to deactivate the pen annotation.

To edit properties of the pen:

1. Select the annotation
2. Right-click, and then click **properties**



Line color changes the color of the Line drawn with the pen.

Line width changes the Line width.

Checking the Transparent checkbox will make the Line transparent.

**Restore Default** button will restore default property of the pen and **Set as Default** button will set the present property of the pen as the default value.

#### 4.4.2.7 Text:

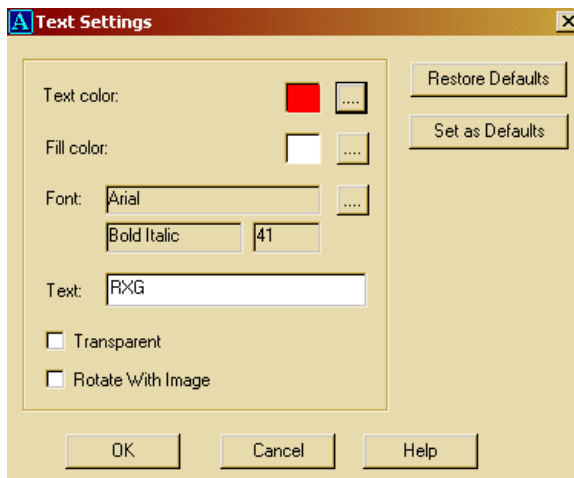
To write your comments.

To write a text:

1. On the **Annotation** menu, click **Text** or click on the icon from the toolbar or use short cut key **Ctrl+Alt+T**
2. To write click on the page with the mouse or use short cut key **Alt+F2**, you will see the cursor on the page.
3. To close the edit mode of the text annotation click **F2**.

To edit properties of the text:

1. Select the annotation
2. Right-click, and then click **properties**



Text color changes the color of the text.

Fill color fills color in the text box.

Font is for formatting the text size and style.

You can edit the text in the textbox.

Check the Transparent checkbox to make it transparent.

Check the Rotate With Image checkbox, if you want the text annotation to rotate along with the image.

**Restore Default** button will restore default property of the text and **Set as Default** button will set the present property of the text as the default value.

#### 4.4.2.8 Stamp:

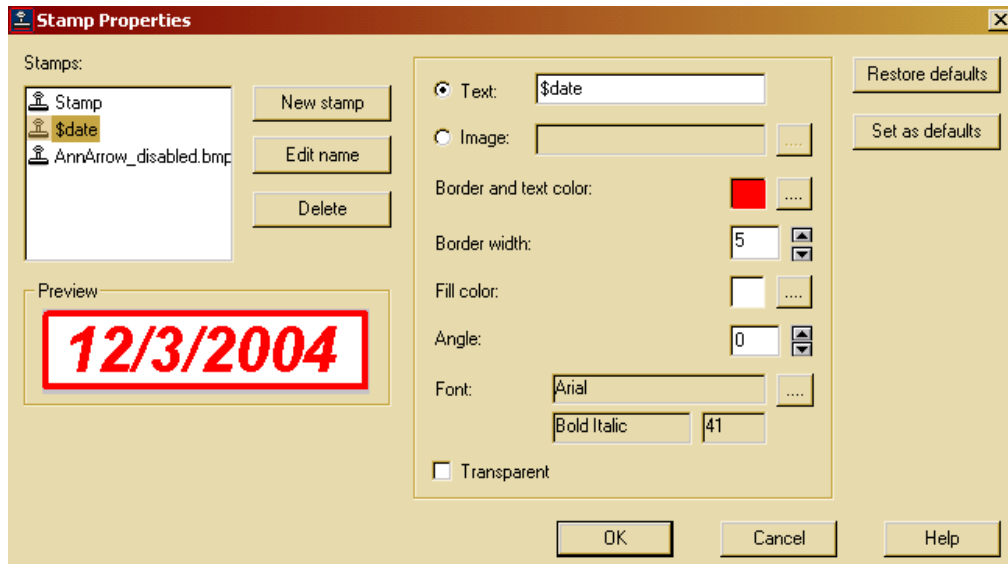
This can exactly replace a stamp we use on the hard copy, e.g. to mark certain documents as accepted or rejected.

To add a stamp:

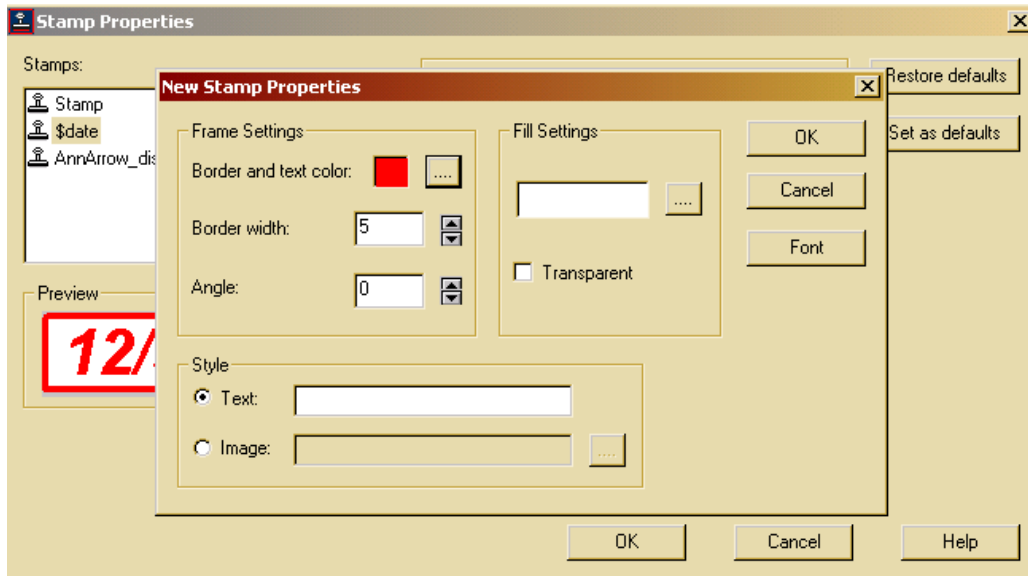
1. On the **Annotation** menu, click **Stamp** or click on the icon from the toolbar or use short cut key **Ctrl+Alt+S**
2. To add click on the page or use short cut key **Alt+F2**

To edit properties of the stamp:

1. Select the annotation
2. Right-click, and then click **properties** or select and click Alt+Enter.



New stamp can be created with the new stamp dialogbox.



Using New Stamp Properties dialog box we can edit the new stamp properties.

You can select Border color, text color, border width and the angle of the stamp with respect to the image from the property window.

You can any of the two styles for the image. Either selects the text option and adds text there or selects Image and selects the image you want to display on the stamp.

You can select the color to be filled in the stamp.

Checking transparent checkbox will make the stamp transparent.

You can change the name of the stamp with Edit Name button.

Delete button deletes selected stamp from the list.

 **Note:** You cannot delete all entries of the list. There must be at least one stamp remaining in the list.

You can also edit other properties like Border width, color, font, text color etc. **Restore Default** button will restore default property of the text and **Set as Default** button will set the present property of the text as the default value.

#### 4.4.2.9 Sticky Note:

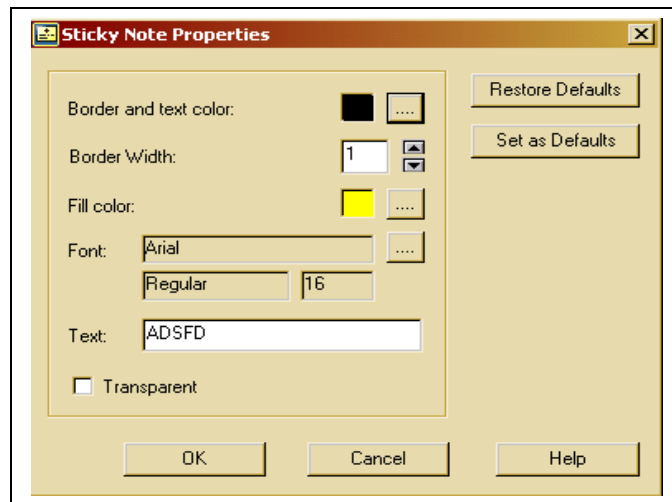
We are all familiar with yellow sticky notes very commonly used in offices. Here you can have a sticky note of whole range of colors.

To add a Sticky Note:

1. On the Annotation menu, click **Sticky Note** or click on the icon from the toolbar or use short cut key **Ctrl+Alt+N**
2. To add click on the page or use short cut key **Alt+F2**. It will open the sticky note in edit mode.
3. To close the edit mode of the sticky note click **Alt+F2**.

To edit properties of the Sticky Note:

1. Select the annotation.
2. Right-click, and then click **properties** or select and click **Alt+Enter**.



Border color and text color changes the color of the border and the text respectively.

Border width changes the border width of the note.

Fill color fills color in the note.

Format e text written in the note using Font.

Edit the text written in the note in the text box.

Checking the Transparent checkbox will make the note transparent

**Restore Default** button will restore default property of the note and **Set as Default**

button will set the present property of the note as the default value.

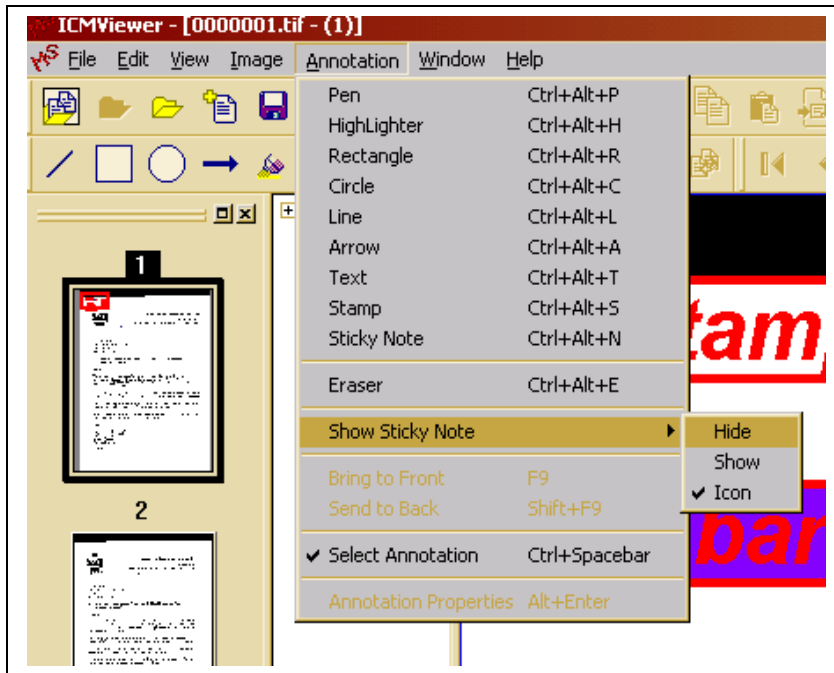
Sticky notes can be hidden shown or even displayed as an icon on the page.

To hide the sticky note:

On the Annotation menu select **Show Sticky Note->Hide**.

To display it as an icon:

On the Annotation menu select **Show Sticky Note->Icon**



Note: We can erase an annotation with eraser tool.

#### 4.4.3 Showing and Hiding annotation:

To show or hide annotations:

On the **Annotation** menu, click **Show Annotations**. Or click “**Show/Hide**” icon from the toolbar.



Note: When the command has a check mark next to it, all annotations are visible. When there is no check mark, all annotations are hidden.

#### 4.4.4 Making annotation Permanent:

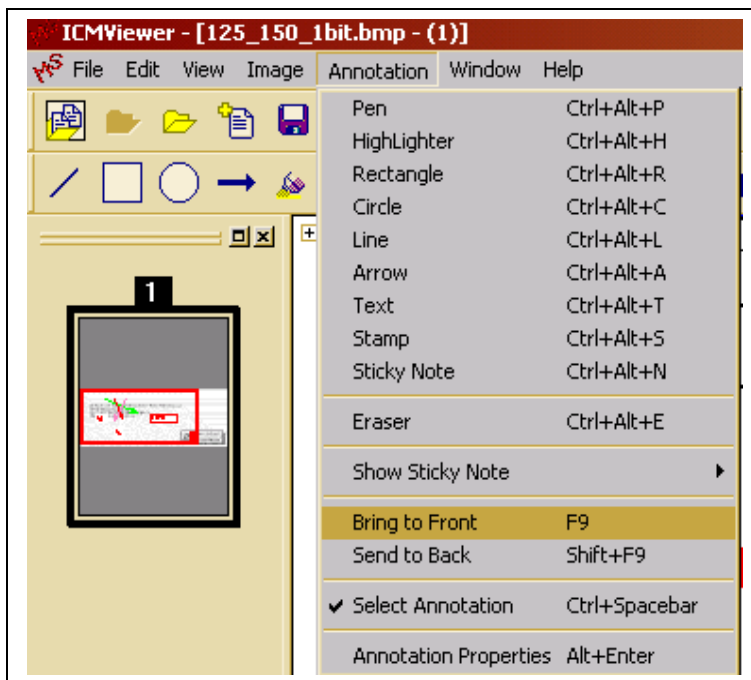
To make annotations permanent:

On the **Annotation** menu, unselect **Select Annotation**. We cannot edit an annotation until this is not selected again.

#### 4.4.5 Setting Priority to Annotation:

**Annotation->Bring To Front** will bring the selected image in front of the annotation just above it. (Or use Short Cut Key F9)

**Annotation->Send To Back** will send the selected image back to the annotation just behind it. (Or use Short Cut Key Shift+F9)



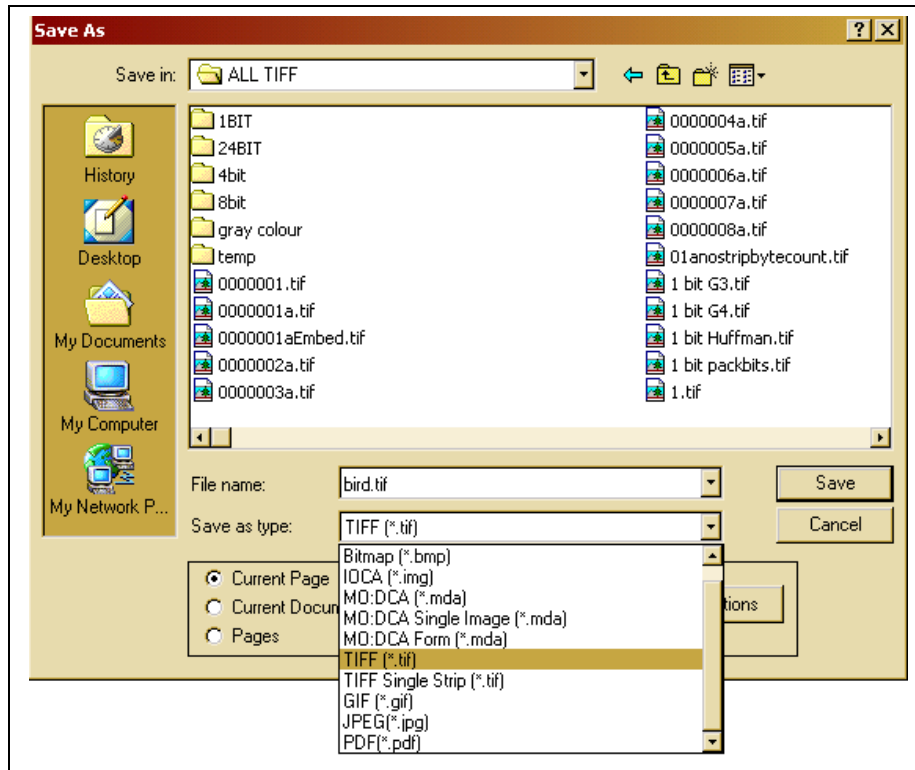
#### 4.4 Saving a Document:

MST Viewer supports saving a file in any of the following file formats:

ASCII	IOCA (MO:DCA)	RLE
ABIC	JBIG	RTF
AFP (MO:DCA)	JBIG2	SVG
BMP	JPEG	TIFF
Brooktrout	JPEG2000	TIFF Group 3 / 4
CALS	MO:DCA	TIFF JBIG
CLIP	MO:DCA Uncompressed	TIFF JPEG
DICOM	PBM	TIFF Uncompressed
DJVU	PGM	TXT
DOC (MS Word)	PNG	WMF
EPS	PPM	XML
GIF	PCL	XPS
Group 3	PDF	<b>- More Added Every</b>
Group 4	PTOCA (MO:DCA)	<b>Quarter</b>

To save a document in a specific format:

1. On the File menu, click Save As
2. Select the location of the document to save.
3. Type the file name and type of the format.
4. Click Save.



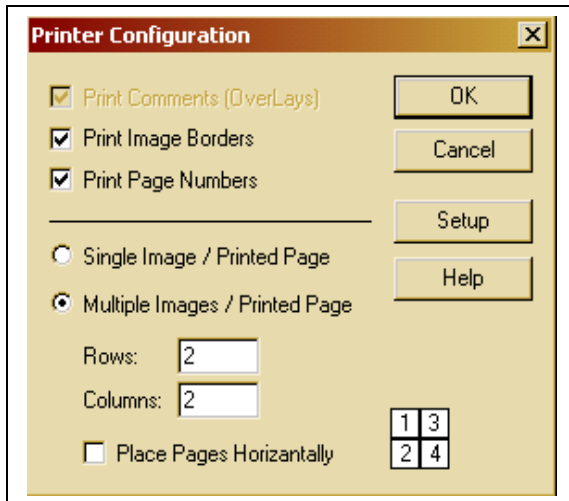
#### 4.6 Printing a Document:

To print a document or range of pages:

On the **File** menu, click **Print**, and then specify **Page Range**.

To edit the printing configuration:

On the **File** menu, click **Printer Configuration**.



#### 4.7 Scanning a Document:

To Scan a Document or a number of documents in one go.

On the **File** menu, click **Scan Document**.

OR

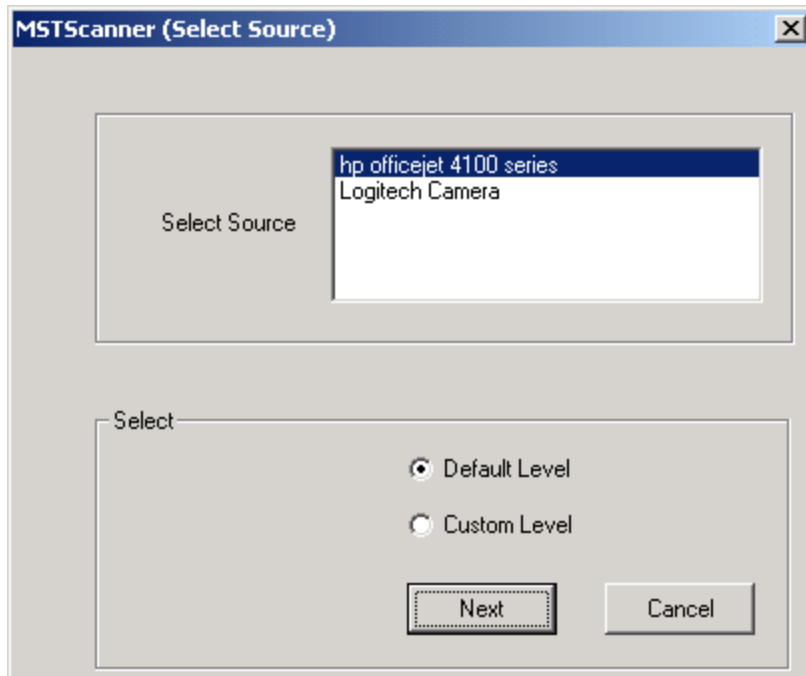
Click On **Scan Button** on the Standard Toolbar

**MSTScanner (Select Source) Dialog Box** appears

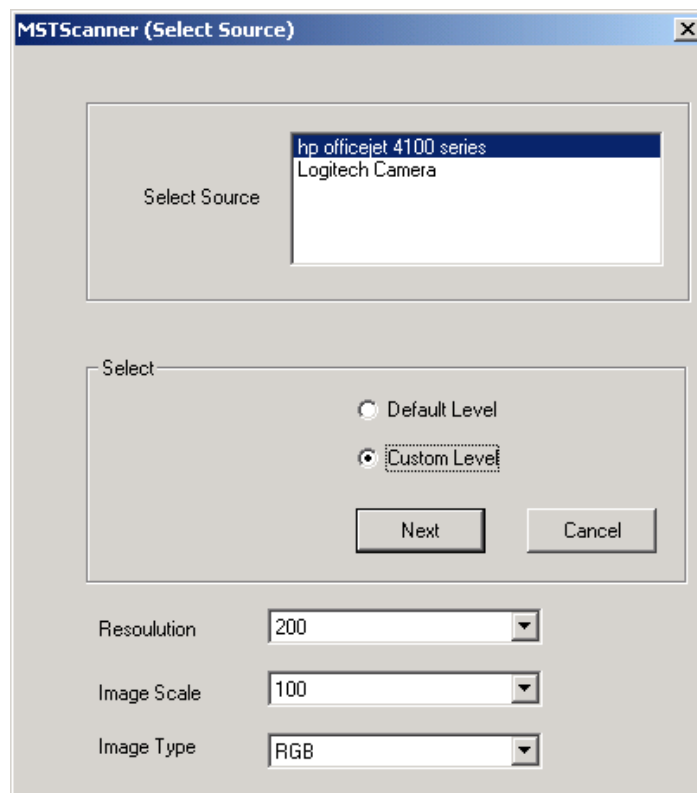
This dialog box will contain:

**List Box:** It will display all the available devices for scanning documents.

**Default Level Option:** It will be selected by default, and would scan the documents with default Resolution, Scaling & Pixel Type.

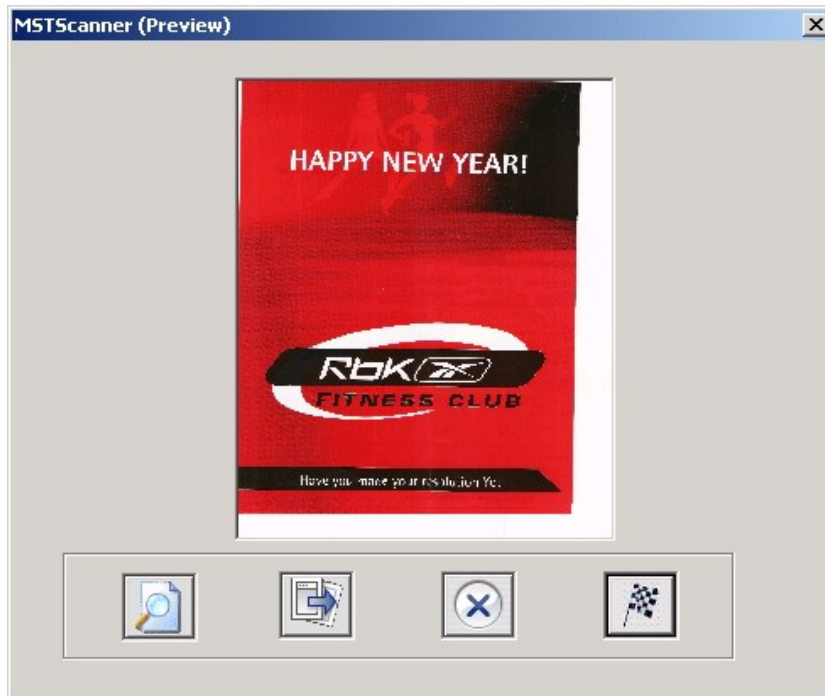


**Custom Level Option:** Selecting this option will allow the user to specify the Resolution, Scaling & Pixel Type.



**Next Button:** This would start the scanning, and the scanned Image will be displayed in the Preview Dialog Box.

**Cancel Button:** This would close the current session, and return the control to MST Viewer, without scanning any document.



Once the image is scanned a small thumbnail preview will be displayed, to the user after which user will have 4 options:

**Preview Button:** User can scan another document without adding the currently scanned document to Working Set of MST Viewer.

**Next Button:** User can choose this option to add the currently scanned Image to the Working Set of MST Viewer, and scan another continuing the same session (i.e. Using the same Device & Setting)

**Cancel Button:** User can choose this option to cancel, discard the currently scanned image and return to MST Viewer closing the current session

**Finish Button:** User can choose this option to add the currently scanned Image to the Working Set of MST Viewer and to return to MST Viewer closing the current session.

#### 4.8 Closing Document:

To close a document

Go to File->Close ( Or Short cut key Ctrl+W)

To close all the document

Go to File->Close All (Or Ctrl+Shift+W)

In case you are downloading images from URL (Uniform Resource Locator e.g. <http://www.ms-technology.com/sample.htm>), there is a link “Close All” which closes all open documents.

#### 4.9 Closing the Application:

Go to File->Exit.

If image is downloaded from the URL, click “Shut Down” on <http://www.ms-technology.com/sample.htm> .

## 5. Appenix

### 5.1 Short Cut Keys:

File Open	Ctrl+O
Close	Ctrl+W
Close All Documents	Ctrl+Shift+W
Save As	F12
Print	Ctrl+P
Cut	Ctrl+X
Copy	Ctrl+C
Paste	Ctrl+V
Insert Page	Insert
Delete Selected	Delete
Delete Document	Ctrl+Delete
Delete All Document	Ctrl+Shift+Delete
Select All Pages	Ctrl+Shift+A
Deselect All Pages	Ctrl+Shift+D
Crop Page	Ctrl+Shift+C
First Page	Home
Previous Page	Page Up
Last Page	End
Next Page	Page Down
Go To Page	Ctrl+G
First document	F7
Next Document	Ctrl+Page up
Last Document	Ctrl+Page Down
Previous Document	F8
Thumbnails	Ctrl+F11
Hide Annotations	F11
Enhance	Ctrl+E
Zoom In	+
Zoom Out	-
Custom Zoom	Ctrl+M
Actual Size	Shift+A
Fit in Window	Shift+F
Fit to Width	Shift+W
Fit to Height	Shift+H
Rotate Right	Ctrl+Arrow Right
Rotate Left	Ctrl+Arrow Left
Rotate 180	Ctrl+Arrow Down
Invert	Ctrl+Alt+I
Magnifying Lens	Alt+L
Image Properties	Ctrl+Alt+Enter
Pen	Ctrl+Alt+P
Highlighter	Ctrl+Alt+H
Rectangle	Ctrl+Alt+R
Circle	Ctrl+Alt+C
Line	Ctrl+Alt+L

<b>Arrow</b>	<b>Ctrl+Alt+A</b>
<b>Text</b>	<b>Ctrl+Alt+T</b>
<b>Stamp</b>	<b>Ctrl+Alt+S</b>
<b>Sticky Note</b>	<b>Ctrl+Alt+N</b>
<b>Eraser</b>	<b>Ctrl+Alt+E</b>
<b>Bring To Front</b>	<b>F9</b>
<b>Send To Back</b>	<b>Shift F9</b>
<b>Select Annotation</b>	<b>Ctrl+SpaceBar</b>
<b>Annotation Properties</b>	<b>Alt+Enter</b>

## 5.2 FAQ:

Q1. Image not getting downloaded?

### Solutions:

Deleting Registry

In case user faces any problem while using MST Viewer he can follow the following steps:

1. Open Registry Editor.
2. Delete HKEY\_CURRENT\_USER\Software\MS Technology Inc

Creating Trace Log file.

MST Viewer creates log files for helping us tracing problem which user faces. In case you face any problems while using MST Viewer kindly follow the following steps:

1. Click on File->Preferences
2. Check the checkbox named "Trace Enabled" and Click on OK.
3. Restart the process, which causes the problem.
4. Log files named "**C:\MSTechLog.txt**". "**C:\MSTechWebLog.txt**" will get generated with all the traces.
5. Kindly, mail us these log files with the proper steps to recreate the problem.

**Configuration** [X]

Configuration Image Features	Configuration Annotation	Annotation ToolBar
Edit ToolBar	File ToolBar	Image Features ToolBar
User Options	Display Options	Configuration Edit
		Configuration View

User Options

- Enable scale to gray
- Maximize window when displaying the document
- Create enhanced thumbnails by default
- Annotations are visible while being moved
- Immediately display changes made in annotation property dialogs to the selected annotations
- Hide Annotations
- Trace Enable

Time Out (Downloading) [10] (Seconds)

Keep Selected

[2097152] (KB)

Tool Bar Placement

- Left Side
- Top Side
- Right Side
- Bottom Side

Temporary Path

[c:\temp\overlays\]

Default URL Address

[http://eipcowtst/ECMDocServices2/GetOverlay.action?strDsAppld=IPProdCommLine]

OK Cancel